



Ready for BEAD. Here For You.

For BEAD-funded projects, now is the time to choose Amphenol Charles Industries.

Backed by decades of experience in broadband and optical network infrastructure, four domestic manufacturing facilities, and a robust U.S.-based supply chain, Charles Industries is uniquely positioned to support BEAD projects.

Our comprehensive range of BABAA-compliant solutions simplifies the purchasing and deployment processes, and our customer support teams are poised to assist with BEAD-specific projects today.

As part of the One Amphenol Solution, partnering with Charles Industries helps you leverage the expertise of all related Amphenol companies for an unparalleled level of support across the FTTx sector.



LINE COLOR LEGEND:

- Trunk
- Feeder
- Drop

Market Challenges



Planning and deployment complexity in underserved areas



Limited and costly skilled and efficient labor



Supply chain disruption and financial sustainability



Stringent grant requirements on services, pricing and deployment schedules

One Amphenol Solution

Charles Industries is part of the One Amphenol Solution, combining the expertise and product offering of multiple Amphenol companies for a comprehensive range of solutions.

- ✓ \$23.1 B company | 90+ years of experience | 190,000 employees globally
- ✓ US Manufacturing facilities
- ✓ Continuous R&D for cutting edge technology
- ✓ High-quality, customized, reliable products for critical applications
- ✓ Comprehensive range of solutions
- ✓ Global presence for efficient support

Pedestals

Series 3 Fiber Pedestal



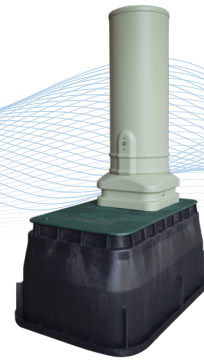
- Shorter lead times for high-volume deployments
- BEAD/BABAA configurations available
- Available in 8" & 10" sizes
- Vault mount option available

Series 2 Fiber Pedestal



- Split base for easy installation and maintenance
- BEAD/BABAA compliant
- Available in 6", 8", 10", and 12" sizes

Vault Mount



- Designed for mounting directly to below-grade enclosures (BGE)
- Improves deployment flexibility
- Vault mount base option, ships with all necessary hardware

Charles Multipurpose Housings (CMPH)



- Cost effective fiber splicing option vs. vaults
- Ease of use and servicing
- Copper options available

Broadband Pedestals (Z01, Z02, R02, B04, B05, B06)



- Cost effective environmental housing for fiber terminals
- Available in multiple dome and base sizes
- Multiple stake and bracket options

Vented Broadband Pedestals (Z05/Z06, Z08, Z14)



- Thermally optimized housings for DPUs, OLTs & active RF devices
- Vertical & horizontal profiles
- Various equipment mounting options

Federally Funded Broadband Programs — BEAD/BABAA Compliance

Charles Industries provides high-quality, cost-effective solutions backed by decades of reliable deployment throughout North America. We're well-positioned and ready to help your customers roll out infrastructure projects to improve broadband access in rural and underserved areas across the country.

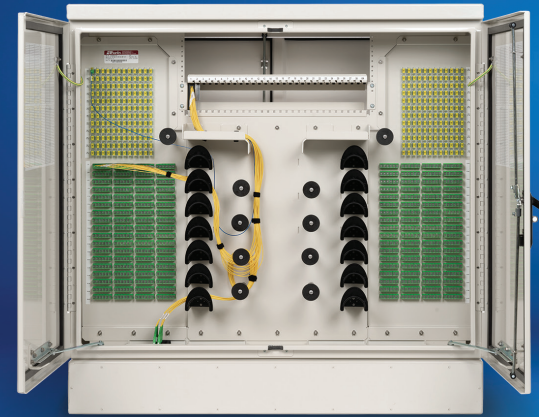
The One Amphenol Solution combines our expertise and a wide range of FTTH solutions compliant with the Build America, Buy America Act (BABAA). With several manufacturing facilities in the US, partnering with Charles Industries ensures hassle-free sourcing of FTTH solutions that meet BABAA requirements.

If you are working with or seeking BEAD, RDOF, or other government-subsidized programs, contact us today to learn how we can help your customers complete their projects on time and under budget.



Fiber Distribution Hubs

Optical Hub Cabinet (OHC)



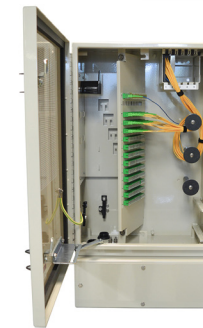
- Medium to large deployments
- Intuitive fiber routing in a compact and environmentally protected fiber cabinet
- Accommodates 96, 144, 288, 432, 576 and 864 subscribers
- Can be pad, pole or vault mounted
- Multiple cable entry locations are positioned at the bottom

Optical Broadband Cabinet (OBC)



- Integrated OLT with battery chamber
- Can deliver GPON, EPON, XGS-PON and NG-PON2
- Constructed from powder-coated aluminum
- Grounding bus bar with multiple grounding studs
- Charles Fiber Splitter Modules (CFSM) are available
- Centralized split in a Passive Optical Network (PON)

Fiber Hub Terminals (CFITH-144)



- Small to medium subscriber base
- Distribution up to 144 subscribers
- Slot for up to five splitters for incremental growth
- 1x4, 1x8, 1x16, 1x32 & 1x64 splitters

Fiber Flexibility Pedestals (CFFP)



- Medium to large subscriber base
- Floodproof and can be installed in almost any location
- Available in four sizes with up to 72, 96, 144 and 288 fiber counts
- 1x4, 1x8, 1x16, 1x32 & 1x64 splitters

MDU Terminal for Splitters or TAPs (CFIT-FS)



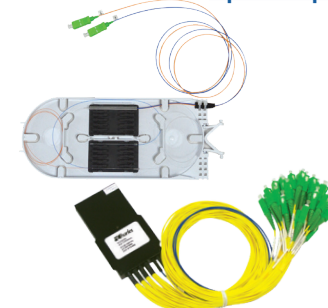
- Robust lightweight polycarbonate construction
- Universal backplane provides ultimate flexibility
- 1x4, 1x8, 1x16, 1x32 & 1x64 splitters

Splice Trays



- Splice Trays available in 3 sizes

Optical Splitters and TAPs



- Operating wavelength of 1260-1650 nm
- GR-1221-CORE and GR-1209-CORE compliant
- Splitter modules fits in CFFP, CFIT, CFBT & OHC
- Splitter and optical tap trays for BDO, CFDP, CFIT & FSDC

Feeder and Drop Cables



- HFOC & HMFOC Outdoor Plant Jumper Assemblies
- Used for drop and feeder cables
- Fully sealed connection with AMT or Mini AMT
- Compatible with OptiTap®
- Plug or in-line receptacle, breakouts to SC, LC or MPO
- Direct buried, conduit and aerial self-supporting

Cabinets & Enclosures

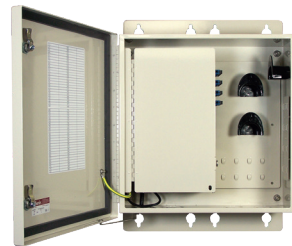
Charles Universal Broadband Enclosures (CUBE)



- Constructed of welded aluminum or steel with a powder coated finish to withstand elements and offer thermal protection
- Can be ordered with integrated equipment to meet your project requirements
- Incorporates design flexibility to customize dimensions and functionality easily

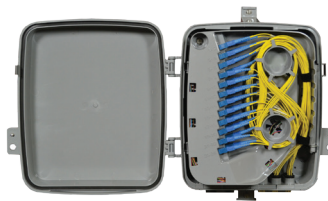
NIDS & Demarcation Terminals

Fiber Interconnect Terminals (CFIT)



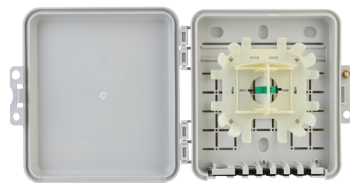
- CFIT serves up to 192 subscribers
- Splice tray basket (standard or hinged) available on feed and/or drop side
- Constructed of powder-coated aluminum

Flexible Fiber Terminals (CFIT-Flex)



- Wall, pole or pedestal mounted
- Constructed of lightweight and rugged polycarbonate
- Serves up to 48 subscribers

Infinity Premises Enclosure (IPE) NID



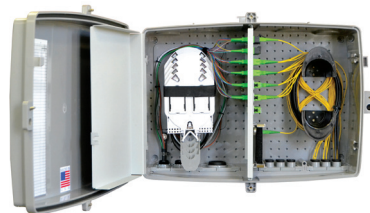
- Convenient size in weather resistant high impact thermoplastic alloy
- Self-latching, hinged cover design snaps closed; with padlock
- Optimize space and cost

Fiber Transition Terminals (CFTT)



- Ideal for low-density fiber circuits
- Supports fiber demarcation and slack applications
- 4 and 8 Port models are available

Fiber Building Terminals (CFIT-FLEX STD)



- Robust lightweight polycarbonate construction
- Universal backplane provides ultimate flexibility
- Fiber optic, copper or coaxial distribution point of up to 72 subscribers

Build with Confidence: BEAD & BABAA Compliant Products

Our products are proudly manufactured in the USA to meet the strict requirements of the Build America, Buy America Act (BABAA) for BEAD-funded products.

Ready to learn more?

Contact our team today to discuss your needs and how our BEAD/BABAA-compliant product solutions can benefit your projects.



BURIED PLANT SOLUTIONS Below Grade Enclosures & Vaults



Below Grade HDPE Enclosures (CBGE)



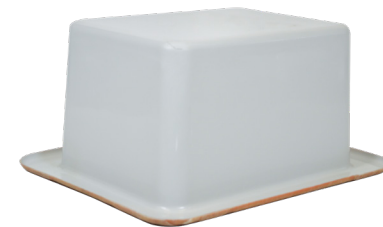
- Rated for light-duty placement, pedestrian traffic
- Lightweight, molded polyethylene hand-holes
- Available in four rectangular and two round sizes

Tier-Rated Underground Enclosures (TRUE)



- Rated for non-deliberate vehicular traffic
- Proprietary advanced composite material
- Tier 15 & 22. Lightweight and stackable

Composite Mounting Platform (CPAD)



- Made from durable composite materials
- Lightweight and multiple sizes available
- Same day installation

Combo CPAD



- 30"x48" TRUE split cover
- Seamless installation of Amphenol Charles Industries, CommScope or Corning Fiber Distribution Hubs
- Tier 15 & 22. Lightweight and multiple sizes available

Splice Closure Solutions



Fiber Aerial Solutions (CFAS)

- Sturdy lightweight construction
- Separated splice and drop compartments
- Robust hardware to accommodate cable mounting and routing
- Utilizes standard and/or small Charles Hinged Splice Trays

BEAD - Deployment Services

Amphenol is well-positioned to support the Broadband Equity, Access, and Deployment (BEAD) Program by delivering comprehensive infrastructure solutions that align with the program's focus on expanding high-speed broadband to unserved and underserved communities. With capabilities spanning Fixed Wireless Access (FWA) and FTTX deployments—including hybrid trunks, jumpers, backhaul, antennas, aerial fiber installation, splitter cabinets, splice enclosures, and customer drops, Amphenol can address both wireless and fiber-based broadband expansion needs.

Amphenol's experienced Services organization has supported over 6,000 cell sites, demonstrating proven field execution at scale. Through engineering, installation, power, grounding, fiber splicing, modular shelter solutions, and disaster recovery capabilities, Amphenol provides turnkey support from design through deployment—enabling state agencies, service providers, utilities, and OEM partners to efficiently execute BEAD-funded broadband projects while meeting Buy America requirements and aggressive implementation timelines.

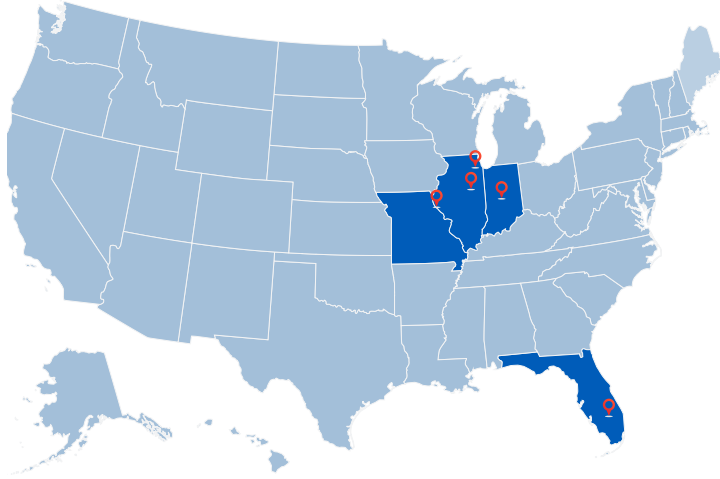
About Charles Industries



Amphenol Charles Industries

Charles Industries, LLC is a diversified manufacturer and marketer of high-technology systems for telecommunications, wireless, broadband cable, utility, EV and edge compute markets. Charles supplies a comprehensive line of environmental enclosure solutions for fiber, copper, coax, and wireless backhaul applications. Founded in 1968, Charles has built a solid reputation of product innovation, outstanding customer service, and field-proven performance.

Charles Manufacturing Plants



With multiple manufacturing facilities across the United States, Amphenol companies provide a comprehensive range of products and solutions compliant with BABAA requirements for BEAD-funded broadband deployments.

Schaumburg, IL (Headquarters)

Rantoul, IL
Whitestown, IN
Canton, MO
Okeechobee, FL

Amphenol

Pioneering Connectivity and Technology Solutions Worldwide

Amphenol stands at the forefront as one of the world's largest providers of high-technology interconnect, sensor, and antenna solutions. With a rich heritage of innovation and excellence, our products are at the heart of the electronics revolution, seamlessly integrating and empowering industries across the globe with capabilities encompassing broadband, enclosures, optics, cables, and antenna solutions.

Our Legacy and Global Reach

Founded in 1932, Amphenol has grown into a global leader, with 190,000 employees worldwide and a presence in more than 40 countries across six continents. Our journey is marked by our commitment to excellence, pushing the boundaries of technology to connect and protect the world.

Diverse Market Expertise



AUTOMOTIVE



BROADBAND
COMMUNICATIONS



COMMERCIAL
AEROSPACE



IT AND DATA
COMMUNICATIONS



MILITARY



MOBILE DEVICES
AND NETWORKS

Innovation at the Core



At Amphenol, innovation is our ethos

Sustainability & Responsibility



Committed to sustainable, responsible operations

Partnering for a Connected Future



Belief in collaborative, inspiring solutions

Join Us in the Electronics Revolution



Explore Amphenol's technology-shaping future

Contact Us Today!



Shavaun Reed
Amphenol Charles Industries
P: (208) 651-32259
E: sreed@charlesindustries.com



Headquarters:
Charles Industries, LLC
1450 American Lane, 20th Floor
Schaumburg, IL 60173-5492
(847) 806-6300
www.charlesindustries.com