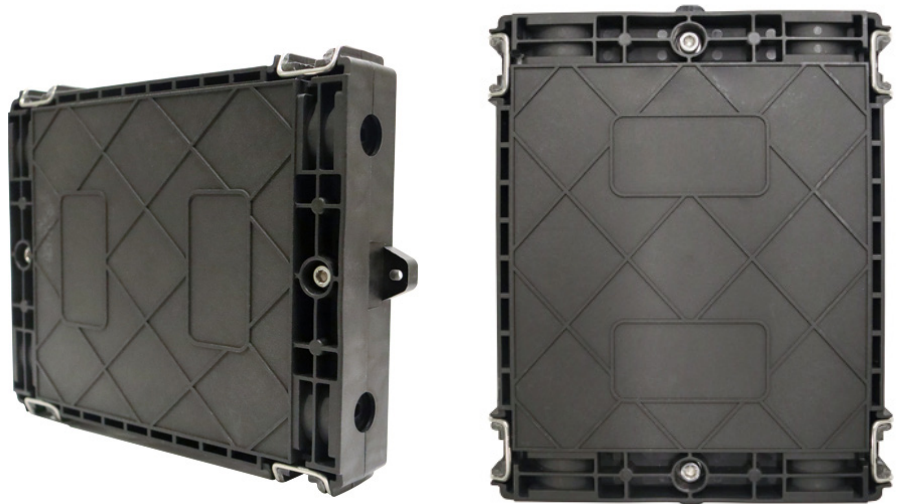


Amphenol Charles Industries Fiber Distribution and Repair Closures, 4 port, are a versatile and functional distribution splice closure for Fiber to the Home applications. The FDRC4P is an inline 2 in and 2 out style horizontal closure. The closure has been designed to be used with round microfiber cables ranging from 5 to 10mm. The units can also accommodate flat drop cables, 8x4 mm or smaller 5x3 mm. The closures contain enhanced cable retention features.

The FDRC4P's compact 9" x 7" size makes it ideal for use in smaller hand-holes such as 14" x 19" models. This reduces the overall cost of deployment compared to larger units.

The closures can accommodate up to 48 single fusion splices. There are optional inserts available to hold PLC splitters or SC adapters. There are optional splice inserts for ribbon fiber as well.

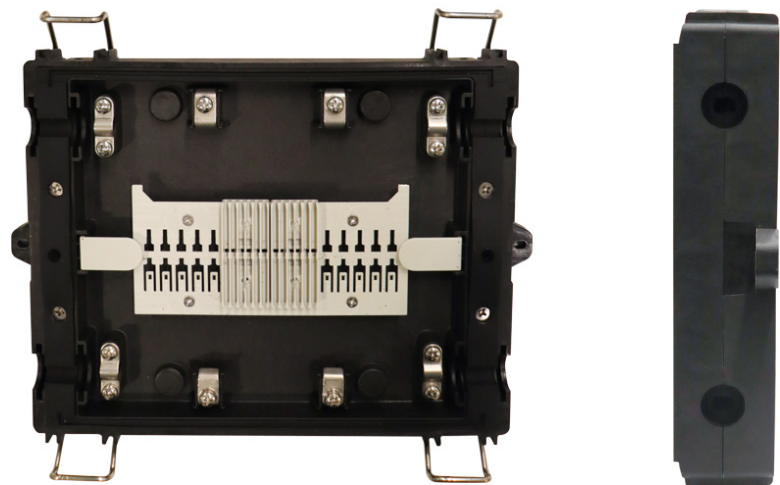
FDRC4P utilizes grommet sealing augmented with gel sealing tap. The units are re-enterable and are IP68 rated.



FDRC4P

FEATURES

- Compact size for low-cost deployments
- 4 cable inline port design
- 12 splice capacity expandable up to 48 splices
- Easy to open/close re-enterable case
- IP68 rated

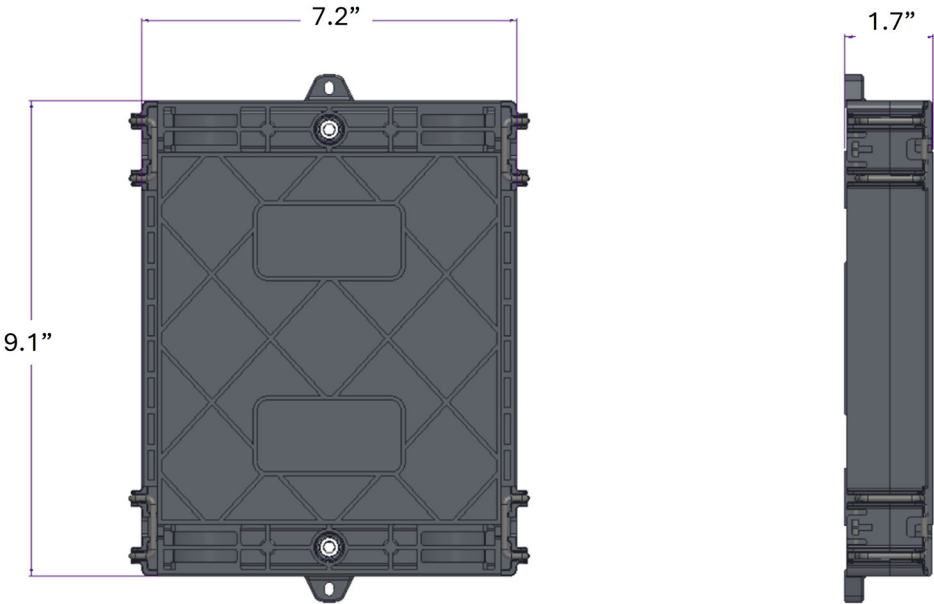


FDRC4P Product Specifications

Material	Glass-filled Polypropylene
Dimensions (L x W x H)	9.1" x 7.2" x 1.7"
Cable Ports	2 in and 2 out inline cable ports accommodate 5 – 10mm cables, plus flat drops
Splice capacity	Standard 12 splices with expansion up to 48 splices
Options	Optional splitter holder. Optional SC adapter holder. Optional ribbon splice inserts
Sealing	Grommet sealing augmented with gel sealing tape
Rating	IP68

FSDCS4P Product Dimensions

All dimensions on the drawing below are in inches





Ordering Information

Part Number	Description	Standard Pack
FDRC4P12S	FDRC, 4 in-line cable ports, 12 splice capacity	16 carton/192 pallet

Please contact Amphenol Charles Industries for additional part numbers

Charles Industries, LLC
An Amphenol Company
1450 American Lane, 20th Floor, Schaumburg, IL 60173

 mktserv@charlesindustries.com
 (847) 806-6300

