



# Amphenol Charles Industries' Pedestal Selection Guide

Build reliable, cost-effective fiber-to-the-premises (FTTP) and fiber-to-the-home (FTTH) networks with mission-critical pedestal components from Amphenol Charles Industries.

Our comprehensive line of pedestals provide environmentally protected access points for the last mile of the fiber network, with the widest range of solutions available to fit the specific demands of virtually any FTTx application.

Charles pedestals optimize economic, environmental and application requirements, with multiple solutions ranging from multi-level environmental protection to basic systems that cost-effectively add reliability to your network.



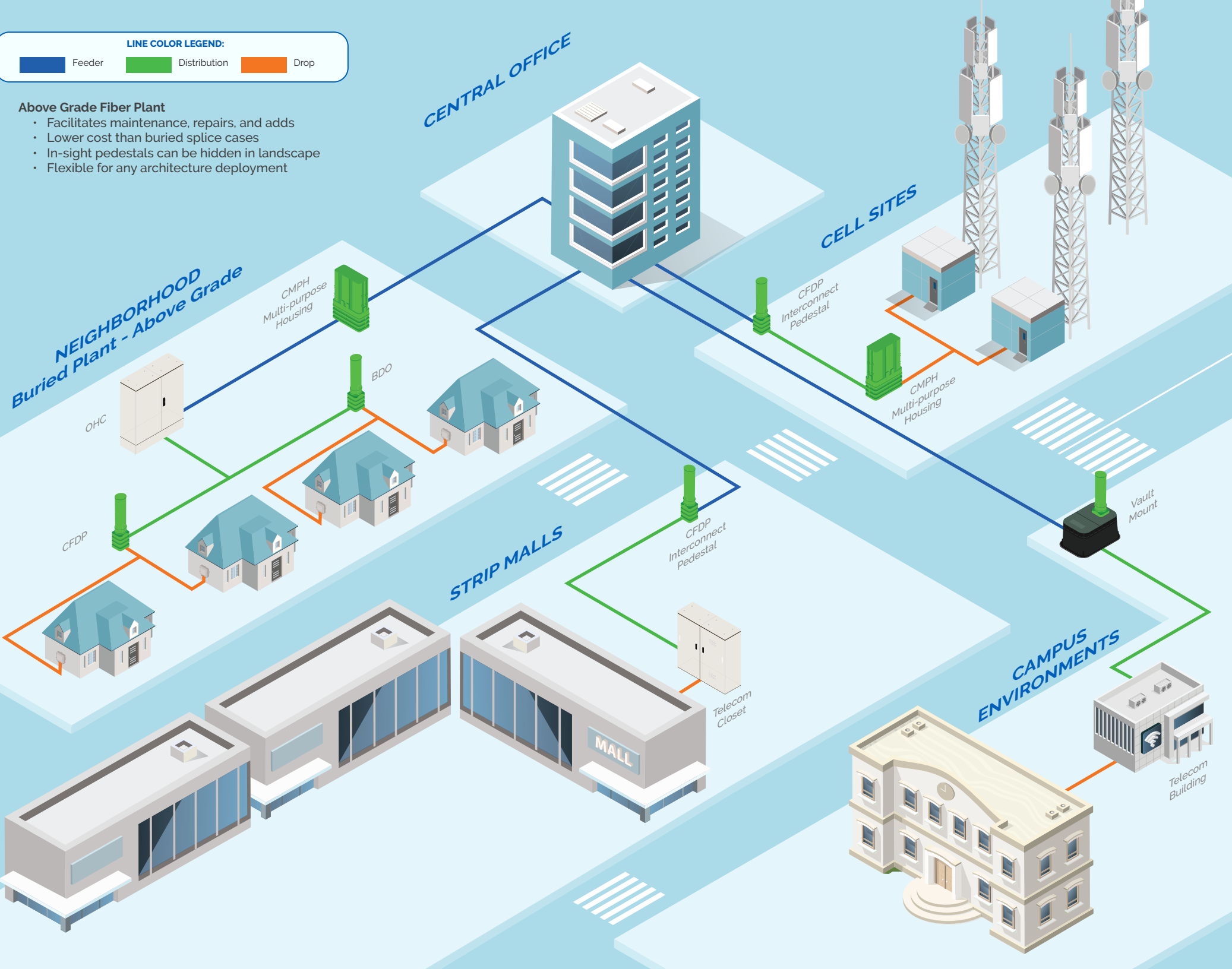


LINE COLOR LEGEND:

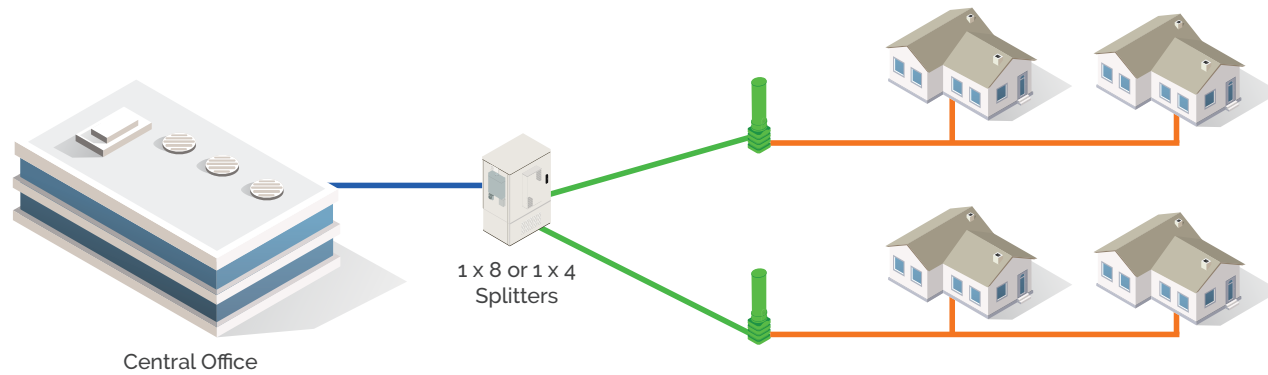
Feeder Distribution Drop

Above Grade Fiber Plant

- Facilitates maintenance, repairs, and adds
- Lower cost than buried splice cases
- In-sight pedestals can be hidden in landscape
- Flexible for any architecture deployment



## Centralized Split



### Pros

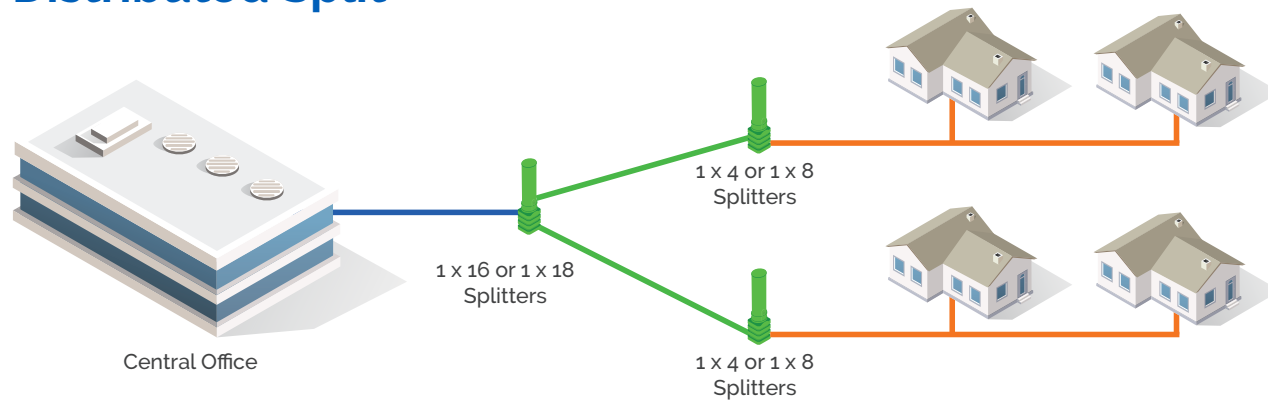
- OLT efficient/pay as you grow
- Future-proof
- Simpler maintenance

### Cons

- Higher fiber investment

**Best used for** urban and dense areas

## Distributed Split



### Pros

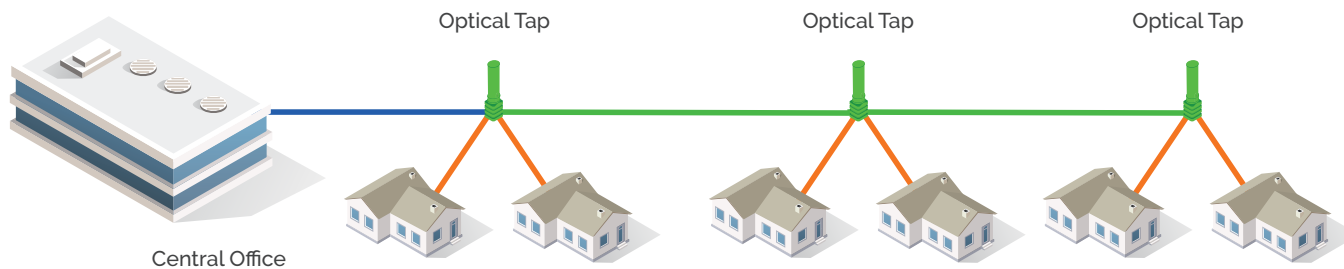
- Leaner fiber
- Lower capex per customer
- Faster turn up

### Cons

- Less flexible/adaptable
- Harder to maintain — two splits

**Best used for** dense areas, increasingly used

## Distributed Tap



### Pros

- Very lean fiber
- Lowest capex per customer
- Good for long distances

### Cons

- Least flexible
- More complex network design

**Best used for** rural and low-density areas

## Outer Shell



**Series 2 Split Base**  
*Extruded PVC*



**Series 3 Square Base**  
*Blow-Molded HDPE*

Series 2 systems are backed by 30-plus years of field-proven reliability. Series 3 shells feature innovative material technology, providing a cost-effective, durable solution for today's applications.

- Robust protection against flood, fire, wind, dust, and debris
- Ample space for multiple conduit entries
- Stability in all soil types
- Series 2 is GR-13 compliant and RDUP listed

# Inner Brackets

## Charles Fiber Distribution Point Pedestals (CFDP)

### *Two-Stage Environmental Protection*

- "Enclosure within an enclosure" design provides formidable defense against the elements including flooding, dirt, debris, insects, and corrosion
- Ideal for protecting fiber optic loop distribution cables and FTTP customer service drops
- CFDP-EPS: Includes both an inner and outer dome
- CFDP-ELS: Outer dome with enhanced security plus two lockable inner compartments



## Buried Distribution Outside Plant Pedestals (BDO)

### *Economical Above-Grade Solution*

- Outstanding OSP protection for sealed fiber terminal blocks
- Constructed from non-metallic materials
- Specially designed terminal mounting plates accommodate multi-subscriber terminals (MSTs) from all major vendors
- Optional integrated splice tray holder



Available in both PVC (Series 2) and HDPE (Series 3).

# CFDP AND BDO SERIES FIBER SPLICE PEDESTALS

Simple access, advanced security, peak protection

- Exclusive fiber organizer design allows technicians to mount splice trays securely with ample access to perform in-field splicing
- Easy access to branch and drop splices
- Optimal protection and storage for loose buffer tube fiber optic cables
- Superior OSP protection against floods, fire, dirt, insects, and impact
- Choose from CFDP or BDO pedestals, Series 2 or Series 3

## Premium



## Advanced



## Standard



Series	Series 2 Split Base	Series 3 Square Base	Series 2 Split Base	Series 3 Square Base
	CFDP-ELS/EPS	CFDP-ELS/EPS	BDO-EG	BDO-EG
Overview	Spliced drop pedestal with inner dome/doors	Spliced drop pedestal with inner dome/doors	Economical "open" fiber pedestal	Economical "open" fiber pedestal
Sizes	6", 8", 10" or 12"	8" or 10"	6", 8", 10" or 12"	8" or 10"
Feed Cable Ports	3, 4, 6	4, 6	3, 4, 6	4, 6
Drop Cable Ports	8, 12, 14, 22	12, 14	8, 11, 24	8, 11
Splice Trays	4, 6, 7, 9, 13	4, 6, 7, 9	4, 6, 7, 9	6, 7
Splice Capacity (Single Fusion)	96, 144, 168, 216, 240, 312, 480	96, 144, 240	96, 144, 240, 384	144, 240
Loose Tube Storage	8, 12, 24	9, 12, 24	8, 12, 24, 32	12, 24
12 Fiber Ribbon	12, 24, 72	24, 72	24, 36, 72	36, 72
Installation	Buried or vault mount	Buried or vault mount	Buried or vault mount	Buried or vault mount



# BDO SEALED FIBER TERMINAL PEDESTALS

Cost-Effective Above-Grade Distribution Point Solution

- Simpler installation, greater accessibility, increased flexibility compared to grade-level boxes
- Non-metallic construction provides superior OSP protection against floods, fire, dirt, insects, and impact

# BROADBAND SEALED FIBER TERMINAL PEDESTALS

Engineered for FTTH and DOCSIS Networks

- Impact-resistant UV-stabilized HDPE
- Reliable protection and mounting for sealed terminals, closures and RF components

## Premium



## Advanced



## Standard



Series	Series 2 Split Base	Series 3 Square Base	Broadband	Broadband	Broadband
	BDO-ET/ETS	BDO-ET/ETS	B05/B06	R02	Z02/Z01
Overview	Fiber Terminal Block Pedestal with or without splice capability	Fiber Terminal Block Pedestal with or without splice capability	Fiber Terminal Pedestal	Fiber Terminal Pedestal	Fiber Terminal Pedestal
Sizes	6", 8", or 10"	8" or 10"	12" x 12"	10" round	10" x 10" 8" x 8"
Feed Cable Ports	Compatible with most vendors' fiber terminal blocks				
Drop Cable Ports					
Splice Trays	1, 3	1, 3	N/A	N/A	N/A
Splice Capacity (Single Fusion)	24, 72	24, 72	N/A	N/A	N/A
Loose Tube Storage	6, 12	6, 12	N/A	N/A	N/A
12 Fiber Ribbon	24, 72	24, 72	N/A	N/A	N/A
Installation	Buried or vault mount	Buried or vault mount	Buried or vault mount	Buried with stake	Buried with stake





# SC CONNECTORIZED DROP PEDESTALS

Fast and easy provisioning of fiber services

- Pre-connectorized "interconnect panel" fiber drops to multiple customers
- Fraction of the cost of LGX-type solutions
- Ideal for multitenant cell site, campus, or strip mall applications
- Built-in SC/APC or SC/UPC adapter bulkhead
- Choose from CFDP or BDO pedestals, Series 2 or Series 3

## Premium



## Advanced



## Standard



Series	Series 2 Split Base	Series 3 Square Base	Series 2 Split Base	Series 3 Square Base
	CFDP-ELS/EPS	CFDP-ELS/EPS	BDO-EG	BDO-EG
Overview	SC Connectorized drop pedestal with inner dome/doors	SC Connectorized drop pedestal with inner dome/doors	SC Connectorized drop pedestal	SC Connectorized drop pedestal
Sizes	6", 8", 10" or 12"	8" or 10"	6", 8" or 10"	8" or 10"
Feed Cable Ports	3, 4, 6	4, 6	3, 4, 6	4, 6
Drop Cable Ports	8, 12, 24	8, 12	8, 12, 24	8, 12
Splice Trays	4, 6, 13	2, 7	4, 6, 7	2, 7
Splice Capacity (Single Fusion)	96, 144, 480	96, 168	96, 144, 168	96, 168
Loose Tube Storage	6, 12, 24	12, 24	8, 12, 24	12, 24
12 Fiber Ribbon	12, 24, 72	36, 72	24, 36, 72	36, 72
Installation	Buried or vault mount	Buried or vault mount	Buried or vault mount	Buried or vault mount





OPTI-TAP® CONNECTORIZED PEDESTALS

- Rapid provisioning for drop-side support
- Built-in Corning brand OptiTap® hardened fiber drop connector
  - Drop-side "interconnect panel" for multi-tenant cell sites, campus or strip mall environments
  - High-capacity fiber bandwidth for wireless backhaul, private networks, or data/video broadband services
  - Choose from CFDP or BDO pedestals, Series 2 or Series 3
  - Well-suited for a range of deployment scenarios, from fiber-to-the-home (FTTH) networks to complex commercial environments,

Premium



Advanced



Standard



Series	Series 2 Split Base	Series 3 Square Base	Series 2 Split Base	Series 3 Square Base
	CFDP-Eo2OPT	CFDP-Eo2OPT	BDO-Eo2OPT	BDO-Eo2OPT
Overview	Opti-Tap Connectorized drop pedestal with inner dome/doors	Opti-Tap Connectorized drop pedestal with inner dome/doors	Opti-Tap Connectorized drop pedestal	Opti-Tap Connectorized drop pedestal
Sizes	6", 8", or 10"	8" or 10"	6", 8" or 10"	8" or 10"
Feed Cable Ports	3, 4, 6	4, 6	3, 4, 6	4, 6
Drop Cable Ports	6, 8	8	6, 8	8
Splice Trays	2, 7	2, 7	2, 7	2, 7
Splice Capacity (Single Fusion)	96, 168	96, 168	96, 168	96, 168
Loose Tube Storage	8, 12, 24	12, 24	8, 12, 24	12, 24
12 Fiber Ribbon	24, 36, 72	36, 72	24, 36, 72	36, 72
Installation	Buried or vault mount	Buried or vault mount	Buried or vault mount	Buried or vault mount



# COPPER PEDESTALS

Superior environmental protection for copper buried distribution points

- Universal compatibility
- Abundant splicing space on sturdy backboard
- Attachment points for terminal blocks and other hardware
- Optional ladder bar attachments for large cable bundle storage

# BROWNFIELD APPLICATION PEDESTALS

Efficient overlay of hardened fiber plant without adding pedestals

- Fiber terminal block or splice
- Copper terminal block with copper splice storage
- Open architecture for flexibility, with 360-degree access
- Flood-proof outer dome, non-metallic construction provide superior protection



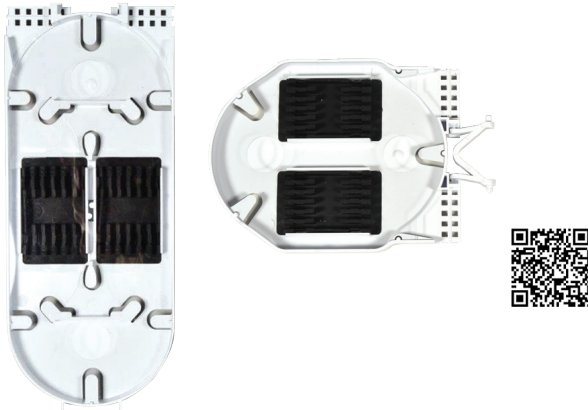
Series	Series 2 Round Base	Series 2 Round Base	Series 2 Round Base	Series 2 Split Base	Series 2 Split Base
	CPLM	CPLS	CPLU	BDO-EB	BDO-CTFT
Overview	Copper pedestal	Copper pedestal	Copper pedestal	Copper/Fiber pedestal	Copper/Fiber pedestal
Sizes	6", 8", or 10"	6", 8", 10" 12"	6", 8", or 10"	10"	10" or 12"
Feed Cable Ports	N/A	N/A	N/A	4	Compatible with most vendors' fiber terminal blocks
Drop Cable Ports	N/A	N/A	N/A	16	
Splice Trays	N/A	N/A	N/A	5	N/A
Splice Capacity (Single Fusion)	N/A	N/A	N/A	192	N/A
Loose Tube Storage	N/A	N/A	N/A	24	N/A
12 Fiber Ribbon	N/A	N/A	N/A	48	N/A
Copper Splice	350, 500, 800 pairs	50, 100, 300, 600, 1200 Pairs	350, 500, 800 pairs	300 pairs	100 or 600 pairs
Installation	Buried or vault mount	Buried or vault mount	Buried or vault mount	Buried or vault mount	Buried or vault mount



## CHARLES FIBER SPLICE TRAYS

Unique design enables simple removal without disturbing already placed fibers, providing greater flexibility when re-entering the tray to perform additional splices.

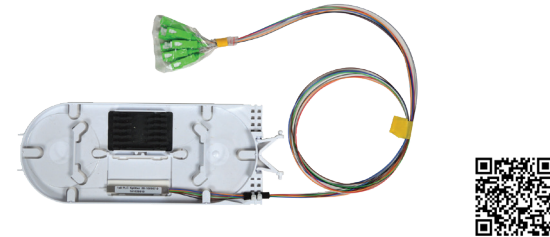
- Engineered specifically for butt-end splices rather than inline
- Capacity: Up to 24 single fusion, 2 mass fusion (12-fiber ribbons), or 12 mechanical splices
- 4" x 9" and 4" x 6" configurations available
- Large storage space, ample tie-down positions, and deep fiber well for simplified installation and usage
- Molded-in directional arrows show routing paths, with industry-standard bend radius protection
- Convenient tabs hold clear dust cover firmly in place



## FIBER SPLITTERS AND SPLITTER TRAYS

Simple platform to deploy a distributed split architecture in a fiber distribution enclosure such as a Charles Fiber Distribution Point (CFDP) or Buried Distribution Optical (BDO) pedestal.

- Each kit includes: One or two splice trays, mounted splitter with stranded 250-micron fibers, transportation tubes, and tie wraps
- Options include: 1x2, 1x4, and 1x8, with bare fiber inputs/outputs or bare inputs/connectorized pigtail outputs 4" x 9" and 4" x 6" configurations available
- Large-count 1x32 splitter includes two splice trays
- Trays measure 4" x 9"
- Loose splitters also available



## PEDESTAL/VAULT COMBO

Efficient combination design for small footprint/tight easement locations.

- Helps minimize overall costs by reducing installation time—no trenching conduit and cabling between pedestal and handhole
- Includes split cover with opening—mount pedestal and run fiber on one half, access below-grade storage on the other half
- Mounting stake includes C-strand bracket and hardware to mount pedestal base to the vault



## About Amphenol Charles Industries

Founded in 1968, Amphenol Charles Industries is a manufacturing and technology company based in Schaumburg, Illinois, with North American manufacturing centers in the US and Mexico. Charles provides a comprehensive line of active, passive, metallic and non-metallic environmental enclosure solutions for communications and power distribution applications serving the wireless, telecommunications, broadband cable, utility, EV charging, and edge compute markets worldwide.

Amphenol Corporation, a world leader in antenna, optics, and interconnect solutions with more than 100,000 employees serving 70 countries worldwide, acquired Charles in April 2019. Today, Charles operates as an Amphenol Company, leveraging Amphenol's global resources and innovative technologies to create new, bundled solutions for customers.

- Cabinet & Enclosures
- Concealment & Pole Solutions
- Pedestals & Housings
- Splice Closures & Terminals
- Fiber Optic Solutions
- Below Grade Enclosures
- NID Boxes
- Accessories



Visit [www.charlesindustries.com](http://www.charlesindustries.com) to see our full line of products

©2024 Charles Industries, LLC • All Rights Reserved • Specifications Subject to Change



Charles Industries, LLC  
An Amphenol Company  
1450 American Lane, 20th Floor  
Schaumburg, IL 60173-5492 USA

P: (847) 806-6300 | Fax: (847) 806-6231  
E: [mktserv@charlesindustries.com](mailto:mktserv@charlesindustries.com)  
[www.charlesindustries.com](http://www.charlesindustries.com)  
Follow us on Social Media: [in](#) [f](#) [v](#)