

**Buried distribution pedestals designed for new FTTH Network buildouts.
Series 3 fiber pedestals utilize all our current backboard options.**

Series 3 pedestal housing is designed and developed for Charles' most popular 8" and 10" Fiber Pedestals. The pedestal housings provide the necessary environmental protection with a similar size and profile as our current pedestals. Series 3 offers the same access and interface for technicians familiar with Charles Pedestals.

Series 3 pedestals are developed as a response to unprecedented industry demand. These pedestals offer the same interface to access, construct, and deliver service as our current popular existing pedestals. In addition, Series 3 pedestals are built of the same thermoplastic resin as our broadly utilized CMPH and Broadband Pedestals with over 20 years of field-proven performance.



Series 3 Fiber Pedestal

FEATURES

- Solid, single-piece square base provides extra space to better manage the ingress and egress of cables, drops, conduits, and innerduct
- Built with already proven HDPE housing, exceptional for use in the OSP space. Holds up to the most critical demands of Telcordia GR-13
- Series 3 pedestals provide the same environmental protection as all other pedestal families, like CMPH and CATV, with over twenty years of field-proven performance Internal wall mount features
- Series 3 peds are accessible from outside by using a quarter turn of a can wrench

MARKETS SERVED:

- Telecom / FTTH
- Utility
- Wireless
- Broadband Cable

Product Specifications

Part Number		BDO304-EG	BDO304-EGT
Diameter		8"	8"
Drop Quantity		8	8
Splitters (Tray)		1x4, 1x8	1x4, 1x8
12 Fiber Ribbon Storage (Opening 12ft±2ft)		36 Ribbons	36 Ribbons
Loose Tube Storage (Opening 12ft±2ft)		12 Tubes	12 Tubes
Splice Tray Capacity Splice Capacity*		6 (4"x9")	6 (4"x9")
Maximum Splice Capacity*	12 Fibers per Tray	72	72
	24 Fibers per Tray	144	144
	48 Fibers per Tray***	N/A	N/A
	144 FOSC A/B Fiber Ribbon Tray**	288	288



BDO304-EG

Part Number		BDO305-EG	BDO305-EGT
Diameter		10"	10"
Drop Quantity		11	11
Splitters (Tray)		1x4, 1x8 or 1x16	1x4, 1x8 or 1x16
12 Fiber Ribbon Storage (Opening 12ft±2ft)		72 Ribbons	72 Ribbons
Loose Tube Storage (Opening 12ft±2ft)		24 Tubes	24 Tubes
Splice Tray Capacity Splice Capacity*		7 (4"x9") or 5 (6"x15")	7 (4"x9") or 5 (6"x15")
Maximum Splice Capacity*	12 Fibers per Tray	84	84
	24 Fibers per Tray	168	168
	48 Fibers per Tray***	240	240
	144 FOSC A/B Fiber Ribbon Tray**	432	432



BDO305-EGT

Part Number		CFDP308-ELS	CFDP310-ELS
Diameter		8"	10"
Large Cable Ports (1" dia. Max)		4	6
Small Cable Drop Ports (5/8" dia. Max)		12	14
12 Fiber Ribbon Storage (Opening 12ft±2ft)		24 Feed Side	72 Feed Side
Loose Tube Storage (Opening 12ft±2ft)		9 Feed Side	24 Feed Side
Splice Tray Capacity	Drop Side	4 (4"x9")	4 (4"x9") or 2 (6"x15")
	Feed Side	2 (4"x9")	5 (4"x9") or 3 (6"x15")
Maximum Splice Capacity*	12 Fibers per Tray	24 Feed / 48 Drop	60 Feed / 48 Drop
	24 Fibers per Tray	48 Feed / 96 Drop	120 Feed / 96 Drop
	48 Fibers per Tray***	N/A	144 Feed / 96 Drop
	144 FOSC A/B Fiber Ribbon Tray**	144 Feed / 288 Drop	288 Feed / 144 Drop



CFDP308-ELS

Part Number		CFDP308-EPS	CFDP310-EPS
Diameter		8"	10"
Large Cable Ports (1" dia. Max)		4	6
Small Cable Drop Ports (5/8" dia. Max)		12	14
12 Fiber Ribbon Storage (Opening 12ft±2ft)		24 Feed Side	72 Feed Side
Loose Tube Storage (Opening 12ft±2ft)		12 Feed Side	24 Feed Side
Splice Tray Capacity		4 (4"x9")	7 (4"x9") or 5 (6"x15")
Maximum Splice Capacity*	12 Fibers per Tray	48	84
	24 Fibers per Tray	96	168
	48 Fibers per Tray***	N/A	240
	144 FOSS A/B Fiber Ribbon Tray**	288	432



CFDP308-EPS Drop Side

Notes:

* Maximum splice capacities shown are for cable-to-cable splices. Overall splice capacity is reduced as drop splices are introduced. For drop splices, Charles recommends using a 12 Fiber Tray with a maximum of 6 drops per tray.

** Capacities shown achieved using FOSS A/B Ribbon Fiber Tray(s).

*** Capacities shown achieved using FOSS D Fiber Tray(s).

CFDP pedestals ship with one 4"x9" splice tray included.

BDO-ET:

- Available in 8" and 10" diameters
- Terminal Mounting Plate

BDO-ETS:

- Available in 8" and 10" diameters
- Terminal Mounting Plate with Built-In Splice Tray Holder



BDO304-ET



BDO304-ETS



BDO305-ET



BDO305-ETS

	4-Port Terminal Block				6-Port Terminal Block			
	Corning® 8.8x2.85x2.75	Commscope® (Tyco®) 9.4x3.4x2.8	Commscope® (ADC®) 10.8x3.95x2.86	AFL 12.4x4.9x3.0	Corning® 8.8x2.85x2.75	Commscope® (Tyco®) 9.4x3.4x2.8	Commscope® (ADC®) 10.8x3.95x2.86	AFL 12.4x4.9x3.0
	Long or Connectorized Feed Cable				Long or Connectorized Feed Cable			
BDO 304-ET	2	1	1	1	1	1	1	1
BDO 305-ET	2	2	2	1	1	2	2	1
	Splice Capable ^{1,2}				Splice Capable ^{1,2}			
BDO 304-ETS	1	1	1	1	1	1	1	1
BDO 305-ETS	2	1	1	1	1	1	1	1

	8-Port Terminal Block				12-Port Terminal Block			
	Corning® 8.8x2.85x2.75	Commscope® (Tyco®) 9.4x3.4x2.8	Commscope® (ADC®) 10.8x3.95x2.86	AFL 12.4x4.9x3.0	Corning® 8.8x2.85x2.75	Commscope® (Tyco®) 9.4x3.4x2.8	Commscope® (ADC®) 10.8x3.95x2.86	AFL 12.4x4.9x3.0
	Long or Connectorized Feed Cable				Long or Connectorized Feed Cable			
BDO 304-ET	1	1	1	1	1	1	0 ³	1
BDO 305-ET	1	2	2	1	1	1	0 ³	1
	Splice Capable ^{1,2}				Splice Capable ^{1,2}			
BDO 304-ETS	1	1	1	1	0	0	0 ³	0
BDO 305-ETS	1	1	1	1	1	1	0 ³	1

Amphenol Multiport Terminal (AMT) and Mini Amphenol Multiport Terminal (Mini-AMT) supports distributed split architecture which is designed to push the PON splitters further into the network and closer to the customer's premise with multiple levels of splitting. Amphenol Fiber Optic Products has developed these small form factor, factory sealed, closure that will house up to a 1 x 8 splitter.

	Amphenol Multiport Terminal (AMT)				Mini Amphenol Multiport Terminal (Mini-AMT)			
	AMT 4-PORT 6.5x13x4	AMT 6-PORT 6.5x13x4	AMT 8-PORT 6.5x13x4	AMT 12-PORT 6.5x13x4	Mini-AMT 4-PORT 4.9x3.5x3.75	Mini-AMT 6-PORT 4.9x3.5x3.75	Mini-AMT 8-PORT 4.9x3.5x3.75	Mini-AMT 12-PORT 4.9x3.5x3.75
	Long or Connectorized Feed Cable				Long or Connectorized Feed Cable			
BDO 304-ET	0	0	0	0	1	1	1	0
BDO 305-ET	1	1	1	1	1	1	1	1
	Splice Capable ^{1,2}				Splice Capable ^{1,2}			
BDO 304-ETS	0	0	0	0	1	1	1	1
BDO 305-ETS	1	1	1	1	1	1	1	1

Notes:

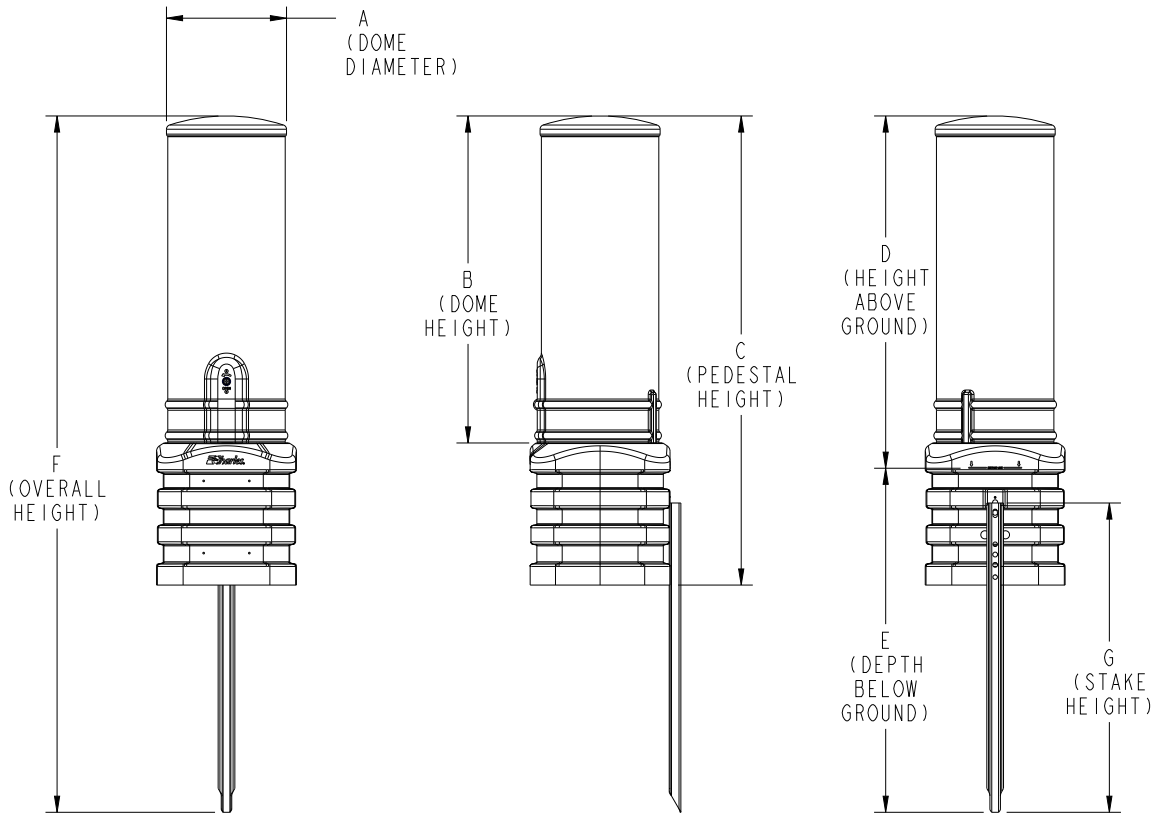
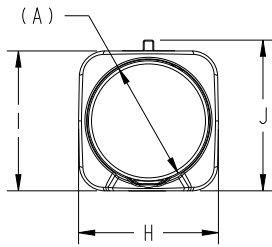
1. Splice trays are ordered separately.
2. BDO 304-ETS use 4"x9" unhinged splice trays. BDO205-ETS use 4"x6" or 4"x9" hinged trays.
3. ADC 12-port block (2 columns x 6 connectors) is too long for standard pedestal. Special order tall pedestal is required.

Product Dimension

Series 3 - Outline Dimensions

All dimensions are in inches

Size	A	B	C	D	E	F	G	H	I	J
8	11.6	29.7	43.5	32.2	33.4	65.6	31	10.8	10.8	11.6
10	11.6	31.7	45.5	34.3	33.6	67.9	31	13.6	13.6	14.4



Ordering Specifications

Charles Part Number	Description
BDO304-ET	8" pedestal, square base, terminal mounting bracket, drop slack storage
BDO304-ETS	8" pedestal, square base, terminal mounting bracket, splice tray holder, bond bar
BDO305-ET	10" pedestal, square base, terminal mounting bracket, drop slack storage
BDO305-ETS	10" pedestal, square base, terminal mounting bracket, splice tray holder, bond bar
BDO304-EG	8" dia. pedestal, square base, expanded-capacity base, G bracket (fiber only), bond bar
BDO304-EGT	8" dia. pedestal, square base, expanded-capacity base, G bracket (fiber only), bond bar with 4"x9" splice tray
BDO305-EG	10" dia. pedestal, square base, expanded-capacity base, G bracket (fiber only), bond bar
BDO305-EGT	10" dia. pedestal, square base, expanded-capacity base, G bracket (fiber only), bond bar with 4"x9" splice tray
CFDP308-ELS	8" pedestal w/square base, sealed double doors greenfield fiber splicing organizer & splice tray
CFDP308-EPS	8" pedestal w/square base, inner dome greenfield fiber splicing organizer, splice tray
CFDP310-ELS	10" pedestal w/square base, sealed double doors greenfield fiber splicing organizer & splice tray
CFDP310-EPS	10" pedestal w/square base, inner dome greenfield fiber splicing organizer, splice tray

Pedestal Accessories	Description
010376-F	1.25" black rubber base grommet plug (25 pieces)
CGHK	Ground hardware kit, 3x 10-32 nuts/bolts (25 pieces)
UMB102A	Universal pole mounting bracket kit
BB2-30STD	30" stake mounting assembly w/mounting hardware, 10 each
BB2-36STD	36" stake mounting assembly w/mounting hardware, 10 each
BB2-42STD	42" stake mounting assembly w/mounting hardware, 10 each
028847F	Plastic splice bag and sealing kit (20 pieces)
38-100170-F	Pedestal warning label (100 pieces)
97-RIBNTRAY144	Tyco® FOSC A/B ribbon splice tray (144 fibers), 1 each
97-RIBNTUBEKIT	3M® ribbon transportation tube kit, 3 ft., 10 each
97-RIBNCLIPKIT	Ribbon saddle clip kit (BDO 304), 40 each
97-RIBNCLIPLG	Ribbon saddle clip kit large (BDO 305), 40 each
97-500512-A	Ground Lug (pkg. 100)
97-FIBR24TRAY	4"x9" Charles Fiber Splice Tray, with dust cover, identification label and 6 cable ties
97-FIBR24HTRAY	4"x9" Charles Fiber Splice Tray, hinged, with dust cover, identification label and 6 cable ties
97-SMHTRAY	4"x6" Charles Fiber Splice Tray, hinged, with dust cover, identification label and 6 cable ties
97-TSBDO2ETS	Tray support for use with Charles standard (97-FIBR24TRAY) or 3rd party splice trays only used for BDO 305-ET and ETS

Charles Industries, LLC

An Amphenol Company

1450 American Lane, 20th Floor, Schaumburg, IL 60173



mktserv@charlesindustries.com



(847) 806-6300

