

## Features

- FTTA Applications
- Single Mode Fiber
- Easy to install, flexible, with low profile cable design, integrated hosting ability
- Bend insensitive
- Designed for harsh environment applications
- Securing washer
- Reusable protection tube, IP67



## Optical Specifications

<b>Product Type:</b>	Fiber Trunk
<b>Fiber Type:</b>	G657A2
<b>Fiber Quantity:</b>	48
<b>Optical Connector A:</b>	LC- Duplex Uniboot
<b>Optical Connector B:</b>	LC- Duplex Uniboot
<b>Insertion Loss Typ. (dB): Per Connector</b>	0.10
<b>Insertion Loss Max. (dB): Per Connector</b>	0.30
<b>Return Loss (dB): (UPC)</b>	50
<b>Pulling Force Typ. (N):</b>	100

## Mechanical Specifications — Core Cable

<b>Water Blocking Method:</b>	Gel-filled loose tube
<b>Strength Material :</b>	Aramid Yarns
<b>Cable Diameter (mm):</b>	10
<b>Cable Jacket Color:</b>	Black
<b>Cable Rating:</b>	OFNR
<b>Min. Bending Radius (mm): Installation</b>	188
<b>Min. Bending Radius (mm): Operation</b>	94
<b>Max. tensile strength (N): Installation</b>	2700
<b>Max. tensile strength (N): Permanent</b>	890
<b>Crush Resistance (N/100mm)</b>	2200

## Mechanical Specifications — Core Cable

<b>Min. Bending Radius (mm): Single Fan-Out</b>	30
<b>Min. Bending Radius (mm): Repeated Fan-Out</b>	30

## Mechanical Specifications— Fan-out

<b>Min. Bending Radius (mm): Single</b>	30
<b>Min. Bending Radius (mm): repeated</b>	30
<b>Max. tensile strength (N):</b>	100

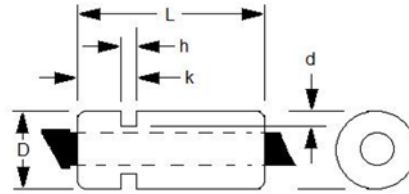
## Environmental Specifications

<b>Temp. Range Operation (°C):</b>	-40 to +80
<b>Temp. Range Storage (°C):</b>	-40 to +80
<b>Temp. Range Installation (°C):</b>	-10 to +65

## Standards and Regulatory

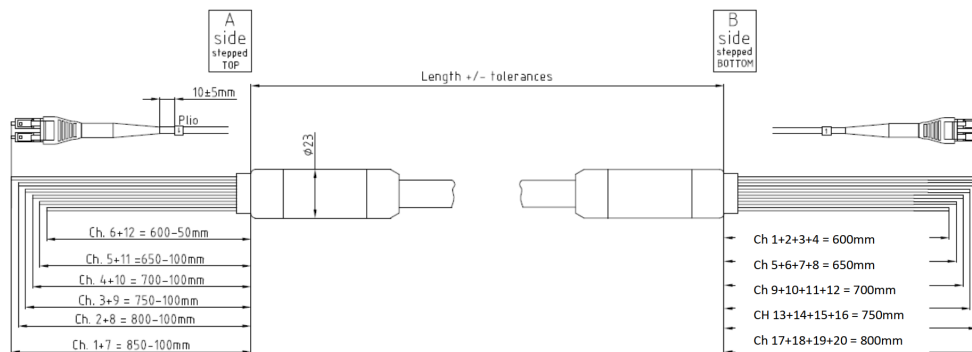
UL 1666 compliant  
 IEC 61300-2  
 IEC 61300-3  
 RoHS compliant 2002/95/EC  
 REACH compliant

## Header Design (1 on top side)



Fiber Header Specifications	Distance in millimeters
L	83.0mm ±0.1mm
h	1.7mm ±0.1mm
k	24.0mm ±0.1mm
d	5.95mm ±0.2mm
D	29.9mm ±0.1mm

## Assembly Design



## Ordering Information

Length	Part Number
15M	942-97312-10015
25M	942-97312-10025
30M	942-97312-10030
50M	942-97312-10050
75M	942-97312-10075
100M	942-97312-10100
125M	942-97312-10125
150M	942-97312-10150
175M	942-97312-10175