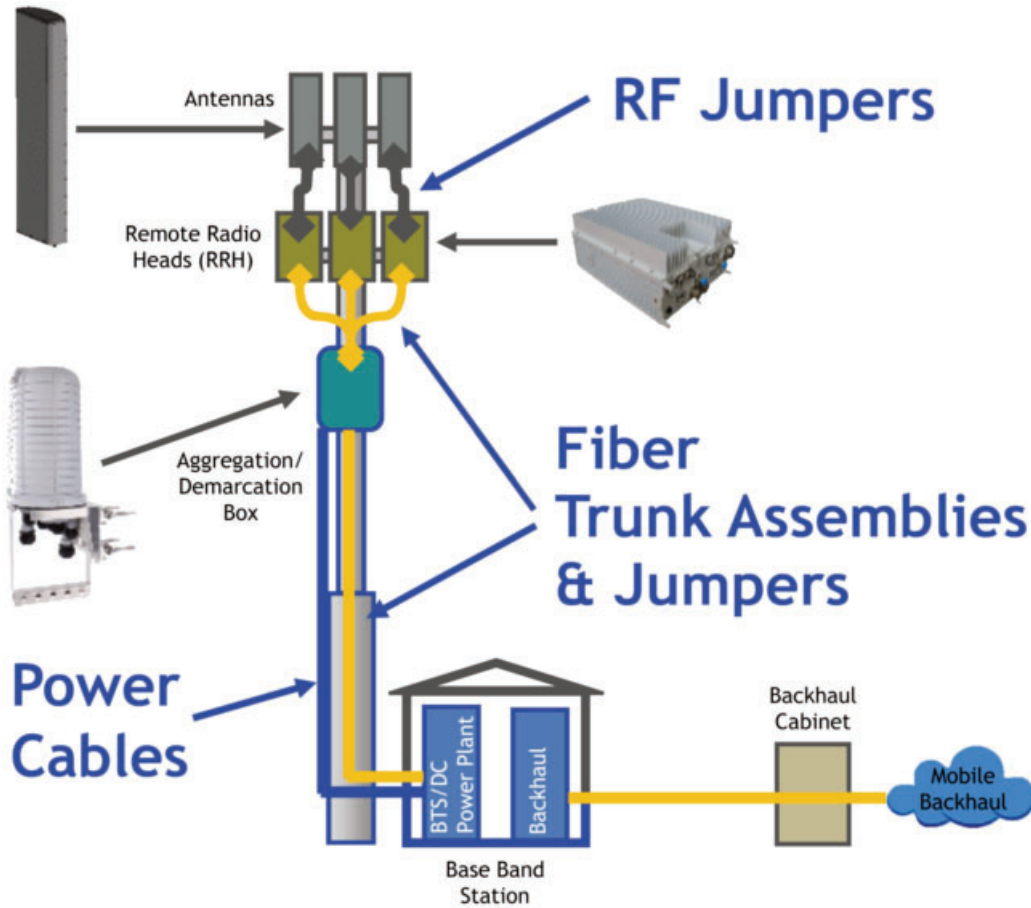


CHARLES CABLING SOLUTIONS

Charles Industries offers a full line of cabling solutions to connect tower equipment to base band stations at cell sites and rooftop small cells. Cabling solutions for connecting antennas, remote radio heads (RRH), and aggregation/demarcation boxes to ground furniture such as power plants and backhaul cabinets are available in many different lengths and pair counts.



FIBER TRUNK ASSEMBLIES
Pages 1-2
FIBER JUMPERS
Page 3
FIBER PATCHCORDS
Pages 4
FIBER ACCESSORIES
Page 4-5
POWER CABLES
Page 6
RF JUMPERS
Page 7-9

FIBER TRUNK ASSEMBLIES

Charles Fiber Optic Trunks are used in Fiber to the Antenna (FTTA) networks to connect base stations to remote radio heads at cell site tower and rooftop deployments for wireless telecommunication applications. They can be deployed in indoor/outdoor installations and feature a UL OFNR cable jacket that is UV stabilized.



Fiber Trunk Assemblies - 6/12/18/24 Pair

6-Pair Fiber Trunk Assemblies

Charles PN	AT&T CEQ	Length (meters)	Description
942-97310-10015	CEQ.48320	15	FTTA Fiber Trunk, 6 Pair, SM G657A2, I/O, LC(D)-LC(D), 15m
942-97310-10030	CEQ.48283	30	FTTA Fiber Trunk, 6 Pair, SM G657A2, I/O, LC(D)-LC(D), 30m
942-97310-10050	CEQ.48410	50	FTTA Fiber Trunk, 6 Pair, SM G657A2, I/O, LC(D)-LC(D), 50m
942-97310-10075	CEQ.48335	75	FTTA Fiber Trunk, 6 Pair, SM G657A2, I/O, LC(D)-LC(D), 75m
942-97310-10100	CEQ.48303	100	FTTA Fiber Trunk, 6 Pair, SM G657A2, I/O, LC(D)-LC(D), 100m
942-97310-10125	CEQ.48314	125	FTTA Fiber Trunk, 6 Pair, SM G657A2, I/O, LC(D)-LC(D), 125m
942-97310-10150	CEQ.48294	150	FTTA Fiber Trunk, 6 Pair, SM G657A2, I/O, LC(D)-LC(D), 150m
942-97310-10175	CEQ.48317	175	FTTA Fiber Trunk, 6 Pair, SM G657A2, I/O, LC(D)-LC(D), 175m
942-97310-10200	CEQ.48301	200	FTTA Fiber Trunk, 6 Pair, SM G657A2, I/O, LC(D)-LC(D), 200m

12-Pair Fiber Trunk Assemblies

Charles PN	AT&T CEQ	Length (meters)	Description
942-97311-10015	CEQ.48291	15	FTTA Fiber Trunk, 12 Pair, SM G657A2, I/O, LC(D)-LC(D), 15m
942-97311-10025	CEQ.48376	25	FTTA Fiber Trunk, 12 Pair, SM G657A2, I/O, LC(D)-LC(D), 25m
942-97311-10030	CEQ.48343	30	FTTA Fiber Trunk, 12 Pair, SM G657A2, I/O, LC(D)-LC(D), 30m
942-97311-10050	CEQ.48341	50	FTTA Fiber Trunk, 12 Pair, SM G657A2, I/O, LC(D)-LC(D), 50m
942-97311-10075	CEQ.48346	75	FTTA Fiber Trunk, 12 Pair, SM G657A2, I/O, LC(D)-LC(D), 75m
942-97311-10100	CEQ.48354	100	FTTA Fiber Trunk, 12 Pair, SM G657A2, I/O, LC(D)-LC(D), 100m
942-97311-10125	CEQ.48348	125	FTTA Fiber Trunk, 12 Pair, SM G657A2, I/O, LC(D)-LC(D), 125m
942-97311-10150	CEQ.48386	150	FTTA Fiber Trunk, 12 Pair, SM G657A2, I/O, LC(D)-LC(D), 150m
942-97311-10175	CEQ.48462	175	FTTA Fiber Trunk, 12 Pair, SM G657A2, I/O, LC(D)-LC(D), 175m

18-Pair Fiber Trunk Assemblies

Charles PN	AT&T CEQ	Length (meters)	Description
942-97312-10015	CEQ.48405	15	FTTA Fiber Trunk, 18 Pair, SM G657A2, I/O, LC(D)-LC(D), 15m
942-97312-10030	CEQ.48381	30	FTTA Fiber Trunk, 18 Pair, SM G657A2, I/O, LC(D)-LC(D), 30m
942-97312-10050	CEQ.48378	50	FTTA Fiber Trunk, 18 Pair, SM G657A2, I/O, LC(D)-LC(D), 50m
942-97312-10060	CEQ.48383	60	FTTA Fiber Trunk, 18 Pair, SM G657A2, I/O, LC(D)-LC(D), 60m
942-97312-10075	CEQ.48394	75	FTTA Fiber Trunk, 18 Pair, SM G657A2, I/O, LC(D)-LC(D), 75m
942-97312-10100	CEQ.48352	100	FTTA Fiber Trunk, 18 Pair, SM G657A2, I/O, LC(D)-LC(D), 100m
942-97312-10125	CEQ.48397	125	FTTA Fiber Trunk, 18 Pair, SM G657A2, I/O, LC(D)-LC(D), 125m
942-97312-10150	CEQ.48355	150	FTTA Fiber Trunk, 18 Pair, SM G657A2, I/O, LC(D)-LC(D), 150m
942-97312-10175	CEQ.48351	175	FTTA Fiber Trunk, 18 Pair, SM G657A2, I/O, LC(D)-LC(D), 175m
942-97312-10200	CEQ.48357	200	FTTA Fiber Trunk, 18 Pair, SM G657A2, I/O, LC(D)-LC(D), 200m

24-Pair Fiber Trunk Assemblies

Charles PN	AT&T CEQ	Length (meters)	Description
942-97313-10015	CEQ.48396	15	FTTA Fiber Trunk, 24 Pair, SM G657A2, I/O, LC(D)-LC(D), 15m
942-97313-10025	CEQ.48350	25	FTTA Fiber Trunk, 24 Pair, SM G657A2, I/O, LC(D)-LC(D), 25m
942-97313-10030	CEQ.48379	30	FTTA Fiber Trunk, 24 Pair, SM G657A2, I/O, LC(D)-LC(D), 30m
942-97313-10050	CEQ.48375	50	FTTA Fiber Trunk, 24 Pair, SM G657A2, I/O, LC(D)-LC(D), 50m
942-97313-10075	CEQ.48395	75	FTTA Fiber Trunk, 24 Pair, SM G657A2, I/O, LC(D)-LC(D), 75m
942-97313-10100	CEQ.48377	100	FTTA Fiber Trunk, 24 Pair, SM G657A2, I/O, LC(D)-LC(D), 100m
942-97313-10125	CEQ.48345	125	FTTA Fiber Trunk, 24 Pair, SM G657A2, I/O, LC(D)-LC(D), 125m
942-97313-10150	CEQ.48349	150	FTTA Fiber Trunk, 24 Pair, SM G657A2, I/O, LC(D)-LC(D), 150m
942-97313-10175	CEQ.48389	175	FTTA Fiber Trunk, 24 Pair, SM G657A2, I/O, LC(D)-LC(D), 175m

FIBER JUMPERS

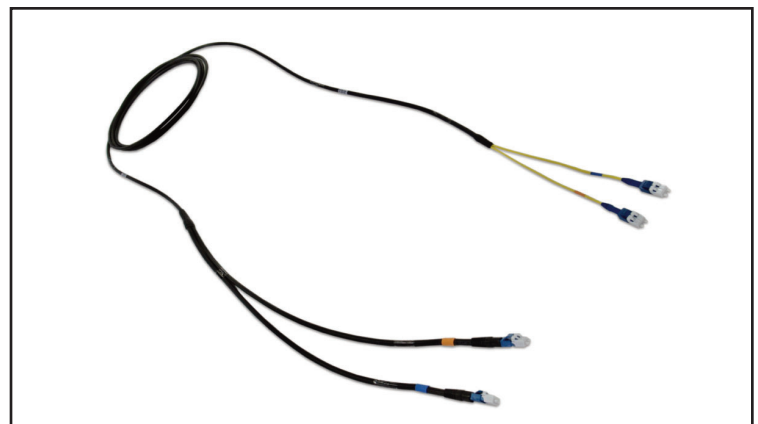
Charles' Fiber Optic Jumpers are used in Fiber to the Antenna (FTTA) networks to connect base stations to remote radio heads at cell site tower and rooftop deployments for wireless telecommunication applications. They can be deployed in indoor/outdoor installations and feature a UL OFNR cable jacket that is UV stabilized.

Single Pair Fiber Jumpers			
Charles PN	AT&T CEQ	Length (meters)	Description
942-97308-10005	CEQ.48403	5	FTTA Fiber Jumper, Single Pair, SM G657A2, I/O, LC(D)-LC(D), 5m
942-97308-107.5	CEQ.48387	7.5	FTTA Fiber Jumper, Single Pair, SM G657A2, I/O, LC(D)-LC(D), 7.5m
942-97308-10010	CEQ.48385	10	FTTA Fiber Jumper, Single Pair, SM G657A2, I/O, LC(D)-LC(D), 10m
942-97308-10015	CEQ.48382	15	FTTA Fiber Jumper, Single Pair, SM G657A2, I/O, LC(D)-LC(D), 15m
942-97308-10020	CEQ.48404	20	FTTA Fiber Jumper, Single Pair, SM G657A2, I/O, LC(D)-LC(D), 20m
942-97308-10035	CEQ.48356	35	FTTA Fiber Jumper, Single Pair, SM G657A2, I/O, LC(D)-LC(D), 35m
942-97308-10050	CEQ.48344	50	FTTA Fiber Jumper, Single Pair, SM G657A2, I/O, LC(D)-LC(D), 50m
942-97308-10075	CEQ.48401	75	FTTA Fiber Jumper, Single Pair, SM G657A2, I/O, LC(D)-LC(D), 75m
942-97308-10100	CEQ.48390	100	FTTA Fiber Jumper, Single Pair, SM G657A2, I/O, LC(D)-LC(D), 100m
942-97308-10125	CEQ.48388	125	FTTA Fiber Jumper, Single Pair, SM G657A2, I/O, LC(D)-LC(D), 125m
942-97308-10150	CEQ.48384	150	FTTA Fiber Jumper, Single Pair, SM G657A2, I/O, LC(D)-LC(D), 150m
942-97308-10175	CEQ.48402	175	FTTA Fiber Jumper, Single Pair, SM G657A2, I/O, LC(D)-LC(D), 175m
942-97308-10200	CEQ.48398	200	FTTA Fiber Jumper, Single Pair, SM G657A2, I/O, LC(D)-LC(D), 200m

Dual Pair Fiber Jumpers			
Charles PN	AT&T CEQ	Length (meters)	Description
942-97309-10005	CEQ.48380	5	FTTA Fiber Jumper, Dual Pair, SM G657A2, I/O, LC(D)-LC(D), 5m
942-97309-107.5	CEQ.48406	7.5	FTTA Fiber Jumper, Dual Pair, SM G657A2, I/O, LC(D)-LC(D), 7.5m
942-97309-10010	CEQ.48399	10	FTTA Fiber Jumper, Dual Pair, SM G657A2, I/O, LC(D)-LC(D), 10m
942-97309-10020	CEQ.48393	20	FTTA Fiber Jumper, Dual Pair, SM G657A2, I/O, LC(D)-LC(D), 20m
942-97309-10035	CEQ.48353	35	FTTA Fiber Jumper, Dual Pair, SM G657A2, I/O, LC(D)-LC(D), 35m
942-97309-10050	CEQ.48391	50	FTTA Fiber Jumper, Dual Pair, SM G657A2, I/O, LC(D)-LC(D), 50m
942-97309-10075	CEQ.48392	75	FTTA Fiber Jumper, Dual Pair, SM G657A2, I/O, LC(D)-LC(D), 75m
942-97309-10100	CEQ.48347	100	FTTA Fiber Jumper, Dual Pair, SM G657A2, I/O, LC(D)-LC(D), 100m
942-97309-10125	CEQ.48342	125	FTTA Fiber Jumper, Dual Pair, SM G657A2, I/O, LC(D)-LC(D), 125m
942-97309-10150	CEQ.48400	150	FTTA Fiber Jumper, Dual Pair, SM G657A2, I/O, LC(D)-LC(D), 150m
942-97309-10175	CEQ.48374	175	FTTA Fiber Jumper, Dual Pair, SM G657A2, I/O, LC(D)-LC(D), 175m
942-97309-10200	CEQ.48359	200	FTTA Fiber Jumper, Dual Pair, SM G657A2, I/O, LC(D)-LC(D), 200m
942-97309-10250	CEQ.48360	250	FTTA Fiber Jumper, Dual Pair, SM G657A2, I/O, LC(D)-LC(D), 250m



Single Pair Fiber Jumpers



Dual Pair Fiber Jumpers



LC (D) Connectors

FIBER PATCHCORDS

Charles Fiber Optic Patchcords are used in Fiber to the Antenna (FTTA) networks to connect base stations to remote radio heads at cell site tower and rooftop deployments for wireless telecommunication applications. They can be deployed in indoor/outdoor installations and featuring a UL OFNR cable jacket that is UV stabilized.

Dual Pair Fiber Patchcords			
Charles PN	AT&T CEQ	Length (meters)	Description
942-97348-10001	CEQ.48307	1	Fiber Patchcord, Duplex, SM G567A2, LSZH, Indoor, yellow LC(D)-LC(D), 1m
942-97348-10002	CEQ.48361	2	Fiber Patchcord, Duplex, SM G567A2, LSZH, Indoor, yellow LC(D)-LC(D), 2m
942-97348-10003	CEQ.48293	3	Fiber Patchcord, Duplex, SM G567A2, LSZH, Indoor, yellow LC(D)-LC(D), 3m
942-97348-103.5	CEQ.48358	3.5	Fiber Patchcord, Duplex, SM G567A2, LSZH, Indoor, yellow LC(D)-LC(D), 3.5m

FIBER CABLE ACCESSORIES

Cable Hanger Grommets		
Charles PN	AT&T CEQ	Description
927-3015	CEQ.48288	Grommet, 1 x 10mm Hole for 7/8" Hanger (Kit of 10)
927-3904	CEQ.48339	Grommet, 1 x 10mm Hole for 1-1/4" Hanger (Kit of 10)
927-2936	CEQ.48321	Grommet, 1 x 22mm Hole for 1-1/4" Hanger (Kit of 10)
927-3906	CEQ.48362	Grommet, 1 x 7mm Hole for 1/2" Hanger (Kit of 10)

Cable Hangers		
Charles PN	AT&T CEQ	Description
927-3099	CEQ.48363	Hanger, Stackable Snap in for 7/8" Size Cable (Kit of 10)
927-3123	CEQ.48281	Hanger, Stackable Snap in for 1-1/4" Size Cable (Kit of 10)
927-3905	CEQ.48326	Hanger, Double Clamp for 7/8" Size Cable (Kit of 10)
927-3908	CEQ.48369	Hanger, Double Clamp for 1-1/4" Size Cable (Kit of 10)
927-3907	CEQ.48329	Hanger, Single Rod Kit, 2 x Single Clamp for 7/8" Size Cable (Kit of 10)

Cable Hanger Adapters		
Charles PN	AT&T CEQ	Description
927-3910-0203	CEQ.48365	Hanger HW, Three-way Snap-In Tower Stand-off Adapter for 2"-3" Round Member (Kit of 10)
927-3910-0304	CEQ.48333	Hanger HW, Three-way Snap-In Tower Stand-off Adapter for 3"-4" Round Member (Kit of 10)
927-3910-0405	CEQ.48331	Hanger HW, Three-way Snap-In Tower Stand-off Adapter for 4"-5" Round Member (Kit of 10)
927-3472	CEQ.48299	Hanger HW, Angle Adaptor (C Clamp) Universal to Accommodate Snap In Hanger (No Insert) (Kit of 10)
927-3914	CEQ.48373	Hanger HW, Angle Adaptor (C Clamp) With 3/8" Tapped Hole (Kit of 10)
927-3911	CEQ.48366	Hanger HW, Stainless Steel Rod Kit for plastic hangers 3/8" x 4.25". Holds Double Clamp Plastic Hanger 927-3908-058 & 927-3908-114 (Kit of 10)

Cable Entry Boots

Charles PN	AT&T CEQ	Description
927-3912	CEQ.48370	Entry Boot, 4" Cable Entry Cushion, 1 x 3/8" Hole and 2 x 7/8" Hole

Hoisting Grips

Charles PN	AT&T CEQ	Description
927-3915	CEQ.48284	Hoisting Grip, 10mm or 3/8" Cables
927-3916	CEQ.48367	Hoisting Grip, 22mm or 7/8" Cables

Fiber Management Enclosures

Charles PN	AT&T CEQ	Description
LSX-ST1RU	CEQ.48371	LCX 1RU Slack Storage Tray 19"



Cable Hanger Grommets



Cable Hangers



Cable Hanger Adapters



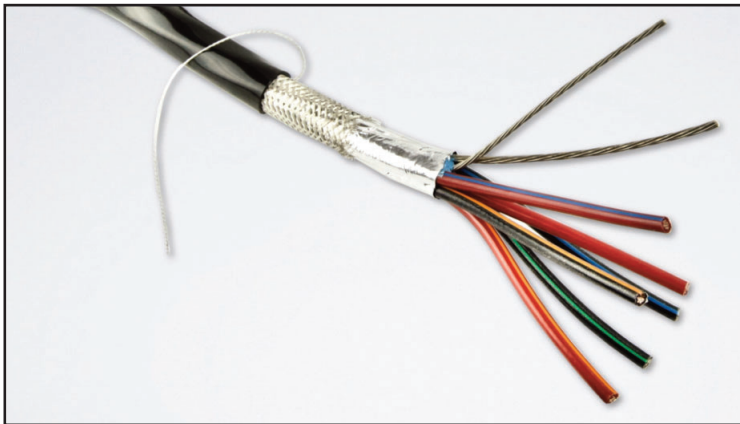
Cable Entry Boots

POWER CABLES

Charles Power Cables provide power from Base Band Station facilities up cell towers to mid-pole and pole top equipment including Antennas, Remote Radio Heads (RRH), Aggregation/Demarcation Boxes, and other powered equipment.

Power Cables are purchased by the foot (12" increments). Please specify desired length in feet when ordering.

Power Cables			
Charles PN	AT&T CEQ	Description	UoM
TFC-TC07-0600-08-21	CEQ.48305	Trunk Cable, 8-AWG 6 - Conductor Unshielded 600 Volts Power Tray Cable - # 8 Tinned Copper (multiple colors) w/ #10 Bare Ground Wire. UL Approved for direct burial or sunlight applications	FT
TFC-TC07-0600-08-20	CEQ.48297	Trunk Cable, 8-AWG 6 - Conductor Shielded (Tinned Copper Braid and Aluminum Tape w/ Drain Wire) 600 Volts Power Tray Cable - # 8 Tinned Copper (multiple colors) w/ #10 Bare Ground Wire. UL Approved for direct burial or sunlight applications	FT
TFC-TC19-0600-06-20	CEQ.48368	Trunk Cable, 6-AWG 6 - Conductor Shielded (Tinned Copper Braid and Aluminum Tape w/ Drain Wire) 600 Volts Power Cable - # 6 Tinned Copper (multiple colors) w / #8 Bare Ground Wire and #10 drain wire. UL Approved for direct burial or sunlight applications	FT
TFC-TC65-0200-12-20	CEQ.48364	Trunk Cable, 12-AWG 2 - Conductor Shielded (Tinned Copper Braid and Aluminum Tape w/ Drain Wire) 600 Volts Power Tray Cable - # 12 AWG 65 Strands Tinned Copper (red and black) w/ #12 Bare Ground Wire. UL Approved for direct burial or sunlight applications	FT
TFC-T105-0200-10-20	CEQ.48279	Trunk Cable, 10-AWG 2 - Conductor Shielded (Tinned Copper Braid and Aluminum Tape w/ Drain Wire) 600 Volts Power Tray Cable - # 10 AWG 105 Strands Tinned Copper (red and black) w/ #10 Bare Ground Wire. UL Approved for direct burial or sunlight applications	FT
TFC-T168-0200-08-20	CEQ.48338	Trunk Cable, 8-AWG 2 - Conductor Shielded (Tinned Copper Braid and Aluminum Tape w/ Drain Wire) 600 Volts Power Tray Cable - # 8 AWG 168 Strands Tinned Copper (red and black) w/ #10 Bare Ground Wire. UL Approved for direct burial or sunlight applications	FT
TFC-T168-0200-08-23	CEQ.48372	Trunk Cable, 8-AWG 1 pair (Coaxial Construction) - Conductor Shielded (Tinned Copper Braid and Aluminum Tape) spiral shield	FT
TFC-TC19-0600-04-20	CEQ.48336	Trunk Cable, 4 AWG 3 Conductor Pair (Coaxial construction) Shielded, 600V Power Cable. Bare Copper with THWN Insulation, BC Spiral Wrap and a PVC Binder; 8 AWG Uninsulated Bare Copper Ground and 12 AWG 7 Strands Tinned Copper Drain Wire	FT



Tinned Copper Braid Power Cable



Coaxial Power Cable

RF JUMPERS

Charles' Radio Frequency (RF) Jumpers' main application is to link the Remote Radio Head and Antenna. Sometimes, they can also be used to link the radio head to the Base Station, or Antenna to the Chassis in the Base Band Cabinet for moderate connection distances. They are built to withstand harsh environments and tested to GR487 requirements.

RF JUMPERS - 1/2" NON-BOOTED					
Charles PN	AT&T CEQ	Description	Connector A	Connector B	Length
AFS-4M4M-12-6FT	CEQ.48334	1/2" Annular 4.3-10 Male to 4.3-10 Male - 6FT	4.3-10 Male	4.3-10 Male	6FT
AFS-4M4M-12-8FT	CEQ.48322	1/2" Annular 4.3-10 Male to 4.3-10 Male - 8FT	4.3-10 Male	4.3-10 Male	8FT
AFS-4M4M-12-10FT	CEQ.48440	1/2" Annular 4.3-10 Male to 4.3-10 Male - 10FT	4.3-10 Male	4.3-10 Male	10FT
AFS-4M4M-12-12FT	CEQ.48280	1/2" Annular 4.3-10 Male to 4.3-10 Male - 12FT	4.3-10 Male	4.3-10 Male	12FT
AFS-4R4M-12-6FT	CEQ.48318	1/2" Annular 4.3-10 Male RA to 4.3-10 Male - 6FT	4.3-10 Male RA	4.3-10 Male	6FT
AFS-4R4M-12-8FT	CEQ.48308	1/2" Annular 4.3-10 Male RA to 4.3-10 Male - 8FT	4.3-10 Male RA	4.3-10 Male	8FT
AFS-4R4M-12-10FT	CEQ.48414	1/2" Annular 4.3-10 Male RA to 4.3-10 Male - 10FT	4.3-10 Male RA	4.3-10 Male	10FT
AFS-4R4M-12-12FT	CEQ.48319	1/2" Annular 4.3-10 Male RA to 4.3-10 Male - 12FT	4.3-10 Male RA	4.3-10 Male	12FT
AFS-4R4R-12-6FT	CEQ.48282	1/2" Annular 4.3-10 Male RA to 4.3-10 Male RA - 6FT	4.3-10 Male RA	4.3-10 Male RA	6FT
AFS-4R4R-12-8FT	CEQ.48292	1/2" Annular 4.3-10 Male RA to 4.3-10 Male RA - 8FT	4.3-10 Male RA	4.3-10 Male RA	8FT
AFS-4R4R-12-10FT	CEQ.48441	1/2" Annular 4.3-10 Male RA to 4.3-10 Male RA - 10FT	4.3-10 Male RA	4.3-10 Male RA	10FT
AFS-4R4R-12-12FT	CEQ.48411	1/2" Annular 4.3-10 Male RA to 4.3-10 Male RA - 12FT	4.3-10 Male RA	4.3-10 Male RA	12FT
AFS-DM4M-12-6FT	CEQ.48324	1/2" Annular DIN Male to 4.3-10 Male - 6FT	DIN Male	4.3-10 Male	6FT
AFS-DM4M-12-8FT	CEQ.48285	1/2" Annular DIN Male to 4.3-10 Male - 8FT	DIN Male	4.3-10 Male	8FT
AFS-DM4M-12-10FT	CEQ.48459	1/2" Annular DIN Male to 4.3-10 Male - 10FT	DIN Male	4.3-10 Male	10FT
AFS-DM4M-12-12FT	CEQ.48312	1/2" Annular DIN Male to 4.3-10 Male - 12FT	DIN Male	4.3-10 Male	12FT
AFS-DM4M-12-15FT	CEQ.48309	1/2" Annular DIN Male to 4.3-10 Male - 15FT	DIN Male	4.3-10 Male	15FT
AFS-4RDM-12-6FT	CEQ.48310	1/2" Annular DIN Male to 4.3-10 Male RA - 6FT	DIN Male	4.3-10 Male RA	6FT
AFS-4RDM-12-8FT	CEQ.48298	1/2" Annular DIN Male to 4.3-10 Male RA - 8FT	DIN Male	4.3-10 Male RA	8FT
AFS-4RDM-12-10FT	CEQ.48316	1/2" Annular DIN Male to 4.3-10 Male RA - 10FT	DIN Male	4.3-10 Male RA	10FT
AFS-4RDM-12-12FT	CEQ.48296	1/2" Annular DIN Male to 4.3-10 Male RA - 12FT	DIN Male	4.3-10 Male RA	12FT
AFS-4RDM-12-15FT	CEQ.48311	1/2" Annular DIN Male to 4.3-10 Male RA - 15FT	DIN Male	4.3-10 Male RA	15FT
AFS-DMDM-12-6FT	CEQ.48408	1/2" Annular DIN Male to DIN Male - 6FT	DIN Male	DIN Male	6FT
AFS-DMDM-12-8FT	CEQ.48286	1/2" Annular DIN Male to DIN Male - 8FT	DIN Male	DIN Male	8FT
AFS-DMDM-12-10FT	CEQ.48304	1/2" Annular DIN Male to DIN Male - 10FT	DIN Male	DIN Male	10FT
AFS-DMDM-12-12FT	CEQ.48409	1/2" Annular DIN Male to DIN Male - 12FT	DIN Male	DIN Male	12FT
AFS-DR4M-12-6FT	CEQ.48328	1/2" Annular DIN Male RA to 4.3-10 Male - 6FT	DIN Male RA	4.3-10 Male	6FT
AFS-DR4M-12-8FT	CEQ.48315	1/2" Annular DIN Male RA to 4.3-10 Male - 8FT	DIN Male RA	4.3-10 Male	8FT
AFS-DR4M-12-10FT	CEQ.48332	1/2" Annular DIN Male RA to 4.3-10 Male - 10FT	DIN Male RA	4.3-10 Male	10FT
AFS-DR4M-12-12FT	CEQ.48295	1/2" Annular DIN Male RA to 4.3-10 Male - 12FT	DIN Male RA	4.3-10 Male	12FT
AFS-DR4M-12-15FT	CEQ.48407	1/2" Annular DIN Male RA to 4.3-10 Male - 15FT	DIN Male RA	4.3-10 Male	15FT
AFS-DR4R-12-6FT	CEQ.48323	1/2" Annular DIN Male RA to 4.3-10 Male RA - 6FT	DIN Male RA	4.3-10 Male RA	6FT
AFS-DR4R-12-8FT	CEQ.48327	1/2" Annular DIN Male RA to 4.3-10 Male RA - 8FT	DIN Male RA	4.3-10 Male RA	8FT
AFS-DR4R-12-10FT	CEQ.48290	1/2" Annular DIN Male RA to 4.3-10 Male RA - 10FT	DIN Male RA	4.3-10 Male RA	10FT
AFS-DR4R-12-12FT	CEQ.48325	1/2" Annular DIN Male RA to 4.3-10 Male RA - 12FT	DIN Male RA	4.3-10 Male RA	12FT
AFS-DR4R-12-15FT	CEQ.48287	1/2" Annular DIN Male RA to 4.3-10 Male RA - 15FT	DIN Male RA	4.3-10 Male RA	15FT
AFS-DRDM-12-6FT	CEQ.48330	1/2" Annular DIN Male RA to DIN Male - 6FT	DIN Male RA	DIN Male	6FT
AFS-DRDM-12-8FT	CEQ.48306	1/2" Annular DIN Male RA to DIN Male - 8FT	DIN Male RA	DIN Male	8FT
AFS-DRDM-12-10FT	CEQ.48337	1/2" Annular DIN Male RA to DIN Male - 10FT	DIN Male RA	DIN Male	10FT
AFS-DRDM-12-12FT	CEQ.48313	1/2" Annular DIN Male RA to DIN Male - 12FT	DIN Male RA	DIN Male	12FT
AFS-DRDR-12-6FT	CEQ.48340	1/2" Annular DIN Male RA to DIN Male RA - 6FT	DIN Male RA	DIN Male RA	6FT
AFS-DRDR-12-8FT	CEQ.48289	1/2" Annular DIN Male RA to DIN Male RA - 8FT	DIN Male RA	DIN Male RA	8FT
AFS-DRDR-12-10FT	CEQ.48302	1/2" Annular DIN Male RA to DIN Male RA - 10FT	DIN Male RA	DIN Male RA	10FT
AFS-DRDR-12-12FT	CEQ.48300	1/2" Annular DIN Male RA to DIN Male RA - 12FT	DIN Male RA	DIN Male RA	12FT

RF JUMPERS - 1/2" BOOTED

Charles PN	AT&T CEQ	Description	Connector A	Connector B	Length
AFS-4MW4MW-12-6FT	CEQ.48422	1/2" Annular 4.3-10 Male + WPS to 4.3-10 Male + WPS - 6FT	4.3-10 Male	4.3-10 Male	6FT
AFS-4MW4MW-12-8FT	CEQ.48444	1/2" Annular 4.3-10 Male + WPS to 4.3-10 Male + WPS - 8FT	4.3-10 Male	4.3-10 Male	8FT
AFS-4MW4MW-12-10FT	CEQ.48454	1/2" Annular 4.3-10 Male + WPS to 4.3-10 Male + WPS - 10FT	4.3-10 Male	4.3-10 Male	10FT
AFS-4MW4MW-12-12FT	CEQ.48430	1/2" Annular 4.3-10 Male + WPS to 4.3-10 Male + WPS - 12FT	4.3-10 Male	4.3-10 Male	12FT
AFS-4RW4MW-12-6FT	CEQ.48436	1/2" Annular 4.3-10 Male RA + WPS to 4.3-10 Male + WPS - 6FT	4.3-10 Male RA	4.3-10 Male	6FT
AFS-4RW4MW-12-8FT	CEQ.48443	1/2" Annular 4.3-10 Male RA + WPS to 4.3-10 Male + WPS - 8FT	4.3-10 Male RA	4.3-10 Male	8FT
AFS-4RW4MW-12-10FT	CEQ.48429	1/2" Annular 4.3-10 Male RA + WPS to 4.3-10 Male + WPS - 10FT	4.3-10 Male RA	4.3-10 Male	10FT
AFS-4RW4MW-12-12FT	CEQ.48431	1/2" Annular 4.3-10 Male RA + WPS to 4.3-10 Male + WPS - 12FT	4.3-10 Male RA	4.3-10 Male	12FT
AFS-4RW4RW-12-6FT	CEQ.48460	1/2" Annular 4.3-10 Male RA + WPS to 4.3-10 Male RA + WPS - 6FT	4.3-10 Male RA	4.3-10 Male RA	6FT
AFS-4RW4RW-12-8FT	CEQ.48428	1/2" Annular 4.3-10 Male RA + WPS to 4.3-10 Male RA + WPS - 8FT	4.3-10 Male RA	4.3-10 Male RA	8FT
AFS-4RW4RW-12-10FT	CEQ.48417	1/2" Annular 4.3-10 Male RA + WPS to 4.3-10 Male RA + WPS - 10FT	4.3-10 Male RA	4.3-10 Male RA	10FT
AFS-4RW4RW-12-12FT	CEQ.48442	1/2" Annular 4.3-10 Male RA + WPS to 4.3-10 Male RA + WPS - 12FT	4.3-10 Male RA	4.3-10 Male RA	12FT
AFS-DMW4MW-12-6FT	CEQ.48450	1/2" Annular DIN Male + WPS to 4.3-10 Male + WPS - 6FT	DIN Male	4.3-10 Male	6FT
AFS-DMW4MW-12-8FT	CEQ.48420	1/2" Annular DIN Male + WPS to 4.3-10 Male + WPS - 8FT	DIN Male	4.3-10 Male	8FT
AFS-DMW4MW-12-10FT	CEQ.48419	1/2" Annular DIN Male + WPS to 4.3-10 Male + WPS - 10FT	DIN Male	4.3-10 Male	10FT
AFS-DMW4MW-12-12FT	CEQ.48446	1/2" Annular DIN Male + WPS to 4.3-10 Male + WPS - 12FT	DIN Male	4.3-10 Male	12 FT
AFS-DMW4MW-12-15FT	CEQ.48451	1/2" Annular DIN Male + WPS to 4.3-10 Male + WPS - 15FT	DIN Male	4.3-10 Male	15 FT
AFS-4RWDMW-12-6FT	CEQ.48412	1/2" Annular DIN Male + WPS to 4.3-10 Male RA + WPS - 6FT	DIN Male	4.3-10 Male RA	6 FT
AFS-4RWDMW-12-8FT	CEQ.48455	1/2" Annular DIN Male + WPS to 4.3-10 Male RA + WPS - 8FT	DIN Male	4.3-10 Male RA	8 FT
AFS-4RWDMW-12-10FT	CEQ.48423	1/2" Annular DIN Male + WPS to 4.3-10 Male RA + WPS - 10FT	DIN Male	4.3-10 Male RA	10 FT
AFS-4RWDMW-12-12FT	CEQ.48453	1/2" Annular DIN Male + WPS to 4.3-10 Male RA + WPS - 12FT	DIN Male	4.3-10 Male RA	12 FT
AFS-4RWDMW-12-15FT	CEQ.48456	1/2" Annular DIN Male + WPS to 4.3-10 Male RA + WPS - 15FT	DIN Male	4.3-10 Male RA	15 FT
AFS-DMWDMW-12-6FT	CEQ.48452	1/2" Annular DIN Male + WPS to DIN Male + WPS - 6FT	DIN Male	DIN Male	6 FT
AFS-DMWDMW-12-8FT	CEQ.48438	1/2" Annular DIN Male + WPS to DIN Male + WPS - 8FT	DIN Male	DIN Male	8 FT
AFS-DMWDMW-12-10FT	CEQ.48426	1/2" Annular DIN Male + WPS to DIN Male + WPS - 10FT	DIN Male	DIN Male	10 FT
AFS-DMWDMW-12-12FT	CEQ.48435	1/2" Annular DIN Male + WPS to DIN Male + WPS - 12FT	DIN Male	DIN Male	12FT
AFS-DRW4MW-12-6FT	CEQ.48421	1/2" Annular DIN Male RA + WPS to 4.3-10 Male + WPS - 6FT	DIN Male RA	4.3-10 Male	6FT
AFS-DRW4MW-12-8FT	CEQ.48449	1/2" Annular DIN Male RA + WPS to 4.3-10 Male + WPS - 8FT	DIN Male RA	4.3-10 Male	8FT
AFS-DRW4MW-12-10FT	CEQ.48437	1/2" Annular DIN Male RA + WPS to 4.3-10 Male + WPS - 10FT	DIN Male RA	4.3-10 Male	10FT
AFS-DRW4MW-12-12FT	CEQ.48434	1/2" Annular DIN Male RA + WPS to 4.3-10 Male + WPS - 12FT	DIN Male RA	4.3-10 Male	12FT
AFS-DRW4MW-12-15FT	CEQ.48432	1/2" Annular DIN Male RA + WPS to 4.3-10 Male + WPS - 15FT	DIN Male RA	4.3-10 Male	15FT
AFS-DRW4RW-12-6FT	CEQ.48415	1/2" Annular DIN Male RA + WPS to 4.3-10 Male RA + WPS - 6FT	DIN Male RA	4.3-10 Male RA	6FT
AFS-DRW4RW-12-8FT	CEQ.48457	1/2" Annular DIN Male RA + WPS to 4.3-10 Male RA + WPS - 8FT	DIN Male RA	4.3-10 Male RA	8FT
AFS-DRW4RW-12-10FT	CEQ.48447	1/2" Annular DIN Male RA + WPS to 4.3-10 Male RA + WPS - 10FT	DIN Male RA	4.3-10 Male RA	10FT
AFS-DRW4RW-12-12FT	CEQ.48416	1/2" Annular DIN Male RA + WPS to 4.3-10 Male RA + WPS - 12FT	DIN Male RA	4.3-10 Male RA	12FT
AFS-DRW4RW-12-15FT	CEQ.48433	1/2" Annular DIN Male RA + WPS to 4.3-10 Male RA + WPS - 15FT	DIN Male RA	4.3-10 Male RA	15FT
AFS-DRWDMW-12-6FT	CEQ.48439	1/2" Annular DIN Male RA + WPS to DIN Male + WPS - 6FT	DIN Male RA	DIN Male	6FT
AFS-DRWDMW-12-8FT	CEQ.48418	1/2" Annular DIN Male RA + WPS to DIN Male + WPS - 8FT	DIN Male RA	DIN Male	8FT
AFS-DRWDMW-12-10FT	CEQ.48413	1/2" Annular DIN Male RA + WPS to DIN Male + WPS - 10FT	DIN Male RA	DIN Male	10FT
AFS-DRWDMW-12-12FT	CEQ.48425	1/2" Annular DIN Male RA + WPS to DIN Male + WPS - 12FT	DIN Male RA	DIN Male	12FT
AFS-DRWDRW-12-6FT	CEQ.48427	1/2" Annular DIN Male RA + WPS to DIN Male RA + WPS - 6FT	DIN Male RA	DIN Male RA	6FT
AFS-DRWDRW-12-8FT	CEQ.48445	1/2" Annular DIN Male RA + WPS to DIN Male RA + WPS - 8FT	DIN Male RA	DIN Male RA	8FT
AFS-DRWDRW-12-10FT	CEQ.48424	1/2" Annular DIN Male RA + WPS to DIN Male RA + WPS - 10FT	DIN Male RA	DIN Male RA	10FT
AFS-DRWDRW-12-12FT	CEQ.48448	1/2" Annular DIN Male RA + WPS to DIN Male RA + WPS - 12FT	DIN Male RA	DIN Male RA	12FT



DIN Male to DIN Male RF Jumper



DIN Male to 4.3-10 Male RF Jumper



4.3-10 Male to 4.3-10 Male RF Jumper

TRAINING VIDEOS

Training videos for AT&T Mobility approved Charles Cabling Solutions are available for viewing at:

http://www.charlesindustries.com/att_mobility.htm

For more information, contact us today.

Brent McMurray
Director, Strategic Accounts - AT&T
Amphenol - RF, Optics and Broadband
bmcurray@amphenol.com
972-672-8844