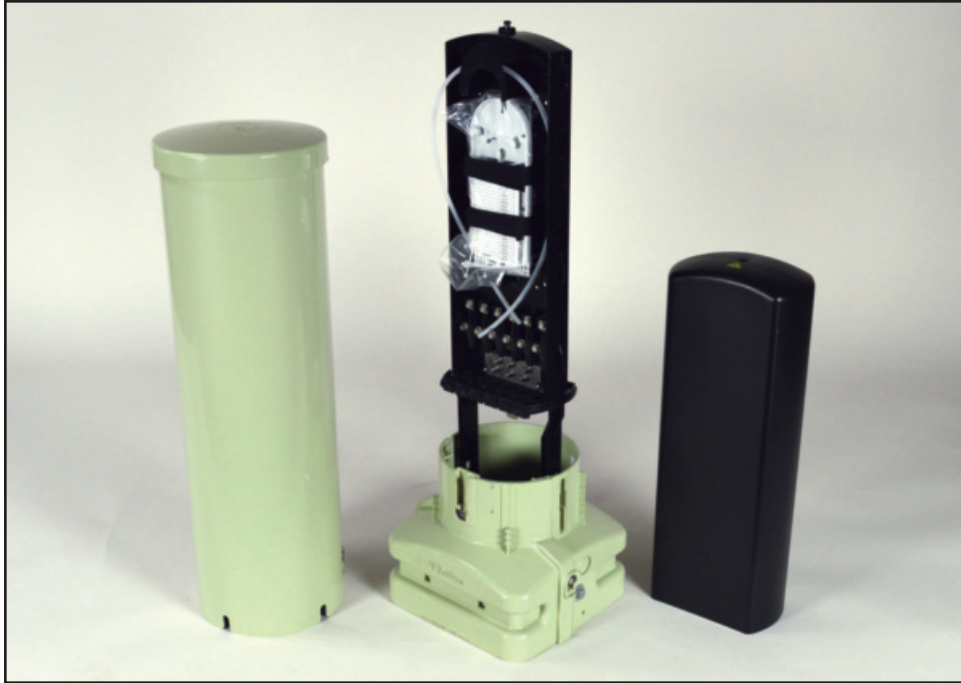


AT&T Approved Charles CFDP Vault Mounted FTTP Pedestal Solution



Fiber Serving Terminal CFDP208-EVPS/ATT



Vault Mounted Pedestal (Handhole Design May Vary)

8" Vault Mount Fiber Serving Terminals (FST)

Oracle Pid #	Description	Charles Part #
ATT.100081458	8" CFDP FST FTTP Pedestal, vault mount short split base including mounting hardware and moisture pad, greenfield fiber organizer, one splice tray, inner dome, two hose clamps, two ground braids, and 6 D-clips	CFDP208-EVPS/ATT
ATT.100083662	Split lid only for 17" x 30" handhole, for Charles 8" CFDP pedestal <i>Hand Hole supplied by third party vendor</i>	N/A
ATT.100002126	Hand Hole Only, 17" x 30" x 36" <i>Hand Hole supplied by third party vendor</i>	N/A

For the most recent information, refer to AT&T FTTP PAN (ATT-TELCO-PAN-2005-3492)

OG-OSP055-K16