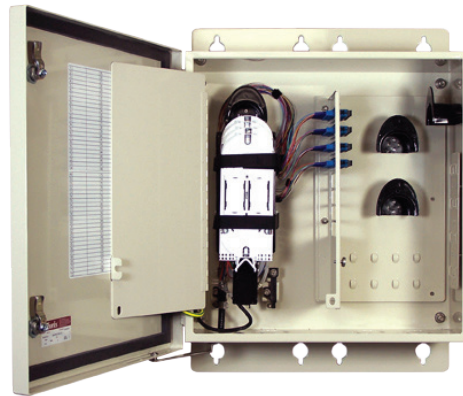


Fast, flexible outdoor aggregation or demarcation enclosure for every type of fiber optic network

Amphenol Charles Fiber Interconnect Terminals (CFIT) provide flexible, compact outdoor enclosure solutions for fiber aggregation or demarcation of up to 96 fiber connectors and/or 432 fiber splices with easily field upgradeable options. The flexible splicing area and bulkhead design allows for splicing or terminating all different fiber types and connectors. With a bare end or connector splitter tray (CFST), CFIT enclosures also offer the capability of a fiber distribution hub. A compact (CFIT-C) version is available for up to 48 fiber connectors and/or 120 fiber splices.



CFIT-S



CFIT-C

FEATURES

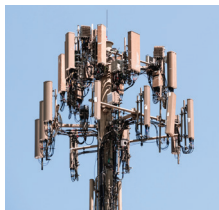
- Constructed of powder-coated aluminum and offers superior environmental protection in all outdoor application
- Light weight, allows for one-person installation on walls, posts or H-frames
- Subscribers can be added incrementally for grow-as-you-go scalability

APPLICATIONS

CFIT cabinets are ideally suited to cellsites, multi-dwelling units (MDU), campuses, strip malls, business parks and other environments where the customer requires high-capacity fiber bandwidth for wireless backhaul, private networks or data and video broadband services. Their convenient form factor saves space and allows for one-person placement on walls, poles or H-Frame mounts.

MARKETS SERVED:

- Telecom / FTTX
- Utility
- Wireless
- Broadband Cable



Cellsites



Garden Style / Low Rise MDU

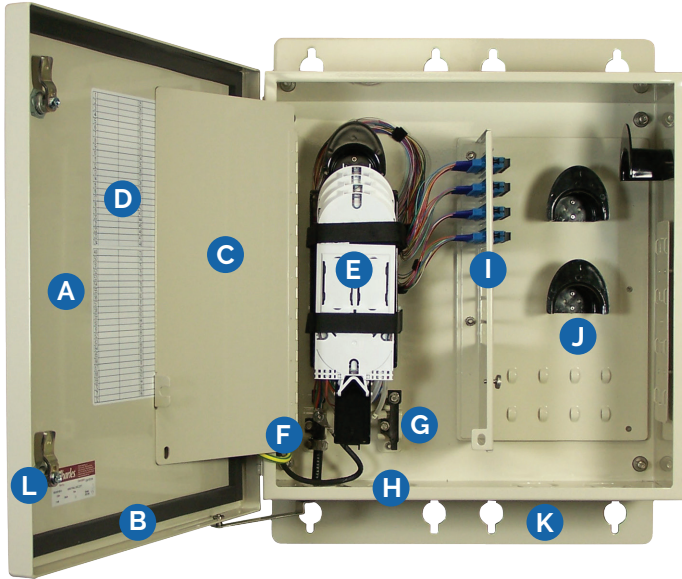


Mid Rise / High Rise MDU

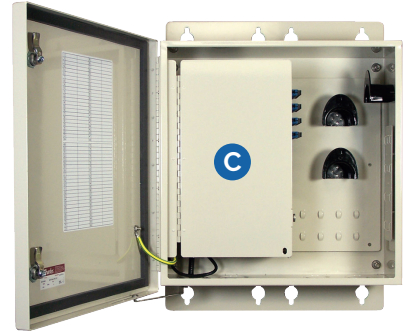


Business Parks

CFIT Product Features



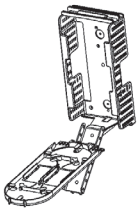
CFIT-S shown. Other configurations and options available. Please see "CFIT Ordering Information" on back page for additional information.



Optional inner security door

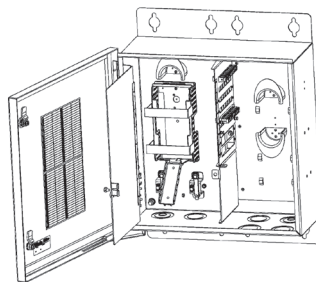
- A** Welded aluminum housing and powder-coated paint finish
- B** Weather-tight door gasket
- C** Optional padlockable inner security door
- D** Address label
- E** Splice tray basket (standard or hinged) available on feed and/or drop side
- F** Bonding plate with external ground lug
- G** Cable and strength member attachments
- H** Knockouts sized for 1.25" and 2" conduit seals
- I** Adapter plate for CO connections and direct equipment interconnects expandable in 12 adapter bank increments up to 96 total SC adapters. Other adapter types available
- J** Connector drop option with fiber bend controls and multiple cable tie-down locations for securing pigtails
- K** Removable external mounting brackets with multiple bolt placement keyholes. Internal mounting option also available
- L** Two 1/4-turn hex-head locks

CFIT Accessory Options



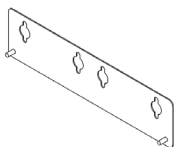
Feed Side Splicing Options

- Hinged splice tray option with up to 9 splice trays
- Connector feed option
- Fiber splitter tray option



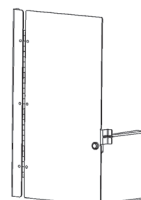
Drop Side Options

- Connector drop option
- Splicing option with up to 9 hinged splice trays (CFIT-S only)



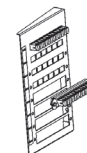
Mounting Options

- External mounting bracket
- Internal mounting



Inner Security Door

- Feed fiber side only
- Padlockable



Adapter Bulkhead

- CFIT-S: Maximum 96
- CFIT-C: Maximum 48

Product Specification



CFIT-S



CFIT-C

Dimensions	21"H x 21"W x 8.5"D (with mounting brackets)	18"H x 18"W x 6"D (w/o mounting brackets)
Weight	25 lbs.	15 lbs.
Construction	Aluminum Welded Construction with Powder-Coated Finish	Aluminum Welded Construction with Powder-Coated Finish
Splicing Capacity	Up to Nine (9) 4"x9" Hinged Splice Trays on Feed Fiber Side Up to Nine (9) 4"x9" Hinged Splice Trays on Drop Fiber Side	Up to Five (5) 4"x9" Hinged Splice Trays on Feed Fiber Side
Fiber Options	Fiber Fanout or Pigtail Accessories w/SC, LC & MPO Conenctors	Fiber Fanout or Pigtail Accessories w/SC, LC & MPO Conenctors
Splitter Trays	1x4, 1x8, 1x16 or 1x32 Bare End or Connectorized Tray Mounted Splitter	1x4, 1x8, 1x16 or 1x32 Bare End or Connectorized Tray Mounted Splitter
Bulkhead Capacity	96 SC Adapters 192 LC Adapters	48 SC Adapters 96 LC Adapters
Cable Ingress/Egress	Feed Side - Two (2) Knockouts for 1.25" or 2" Conduits and removable plug for liquid tight cord grip fitting Drop Side - Four (4) Knockouts for 1.25" or 2" Conduits	Feed Side - Two (2) Knockouts for 1.25" or 2" Conduits and removable plug for liquid tight cord grip fitting Drop Side - Two (2) Knockouts for 1.25" or 2" Conduits
Security Features	Two (2) 216-Hex 1/4 Turn Locks • Inner Lockable Door Available	Two (2) 216-Hex 1/4 Turn Locks • Inner Lockable Door Available
Mounting	Wall or H-Frame Mount with Removable Mounting Brackets • Pole Mount Kit Available	Wall or H-Frame Mount with Removable Mounting Brackets • Pole Mount Kit Available
Compliance	Designed to Meet or Exceed GR-2898-CORE and UL 50 NEMA 4X Specifications	Designed to Meet or Exceed GR-2898-CORE and UL 50 NEMA 4X Specifications

CFIT Ordering Information

CFIT		(1) Cabinet Size	(2) Bulkhead Count	(3) Connector Type	(4) Fiber Quantity	(5) Fiber Type	(6) Feed Splice Type	(7) Mounting	(8) Drop Side Splice	(9) Misc. Kits	
S	Standard	00	0 Adptrs.	0	None	0	None	0	Internal Mounting	0	Connector Drop Mngt
C	Compact	12	12 Adptrs.	A	SC/APC	1	12 Cnctrs.	R	Ribbon Fanout	H	Splice Tray(s)
		24	24 Adptrs.	B	SC/UPC	2	24 Cnctrs.	L	Loose Tube Fanout	P	Connector Feed Mngt
		48	48 Adptrs.	C	LC/APC	4	48 Cnctrs.			P	External Mounting w/ Pole Mount
		72	72 Adptrs.	D	LC/UPC	7	72 Cnctrs.				
		96	96 Adptrs.	E	MPO	9	96 Cnctrs.				
										2	Inner Security Door

- Notes:
- CFIT-Compact (CFIT-C) supports up to 48 adapters and connectors
 - Stubbed Fiber Cable is offered in many types and lengths, call for details
 - Splice Trays are provided 1 tray per 12 adapters ordered
 - Drop Side Splice Tray option is available on CFIT-Standard (CFIT-S) only
 - Many Miscellaneous Kits are available per user specification

- (1) & (3)
- (5)
- (6) & (8)
- (8)
- (9)

Accessories

Part Number

Description


97-ADPT12PNL-U	12 Port SC/UPC Patch Plate
97-CABPMTKIT	Pole Mount Kit (includes hardware)
97-FIBR24HTRAY	Charles Fiber Splice Tray for 12 or 24 fibers, 4" x 9" (hinged)
97-FIBR24TRAY	Charles Fiber Splice Tray for 12 or 24 fibers, 4" x 9" (non-hinged)
CFST-A110400	One 1X4 Charles PLC splitter tray, with 2 transportation tubes and 6 tie-wraps
CFST-A110800	One 1X8 Charles PLC splitter tray, with 2 transportation tubes and 6 tie-wraps
CFST-A111600	One 1X16 Charles PLC splitter tray, with 2 transportation tubes and 6 tie-wraps
CFST-A113200	One 1X32 Charles PLC splitter tray, with 4 transportation tubes and 12 tie-wraps

Charles Industries, LLC

An Amphenol Company

1450 American Lane, 20th Floor, Schaumburg, IL 60173

 mktserv@charlesindustries.com

 (847) 806-6300

