

### Pedestals for the Next-Generation CATV/Broadband Network Equipment

Next-generation CATV network upgrades, including Remote PHY (R-PHY), MAC-PHY, Node + O, Node + N, etc., are placing increasing thermal and space demands on outside plant pedestals. New R-PHY optical nodes are being engineered to dissipate 160 Watts of power; significantly greater than prior generations of pedestal housings were designed to accommodate. Pedestals that cannot accommodate 160W can result in network outages or shorter equipment lifespans due to over-heated equipment.

The Charles Industries' Z14 and Z24 pedestals were engineered specifically to meet the demands of next-generation CATV network architectures and equipment. It is built to withstand the harsh elements typically found in outside plant deployments. Leveraging our expertise in outside plant enclosure engineering, thermal analysis, design, and testing, the Z14 and Z24 are capable of supporting R-PHY compliant equipment across all regions.

#### MARKETS SERVED:

- ☐ Telecom / FTTX
- ☐ Utility
- ☐ Wireless
- ☒ Broadband Cable



Z14

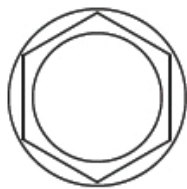


Z24

#### FEATURES

- Dome color is light green, base color is black
- High-density engineered venting provides robust heat dissipation for high-output R-PHY nodes
- Insect resistant openings prevent wasp & bee intrusion, protecting technicians accessing the enclosure
- Self-latching dome locking system reduces unlocked pedestals and unwanted access
- Two-piece base allows for easy retrofit installations for Z14. Extended depth base allows for expanded space to store fiber splice cases and for installations on sloped grades for Z24
- Self-supporting base requires no additional mounting stake
- Molded-in ground line for consistent installations
- Corrosion resistant aluminum or stainless steel brackets and hardware for long service life
- Node plus Fiber Storage Bracket offers cost effective vault-less installation for Z14
- Fiber bracket stores 120 ft. of 0.7" outside diameter cable slack

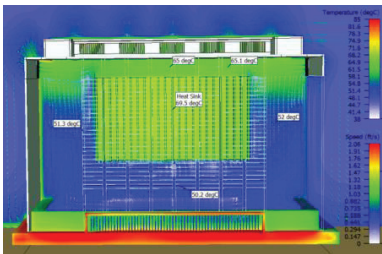
# Lock Type



**HEX-HEAD**  
(216-Tool)

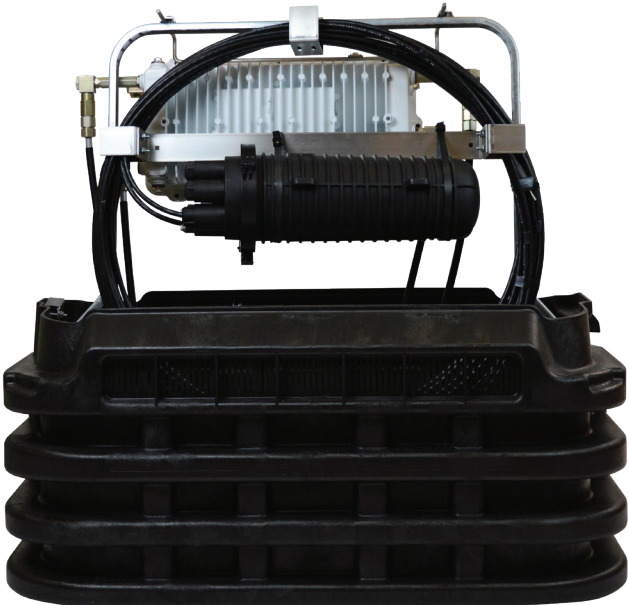
216-tool hex-head lock provides security from unwanted intrusion. Dome secures to base with self-locking mechanism and is easily removed or reattached by a single technician. Additional custom lock options are available. Please contact your account representative for details.

# Thermal Analysis



Charles Thermal Management Experts are available to consult with you on your specific application's heat dissipation needs, including thermal modeling of equipment as would be housed. Please contact your account representative for details.

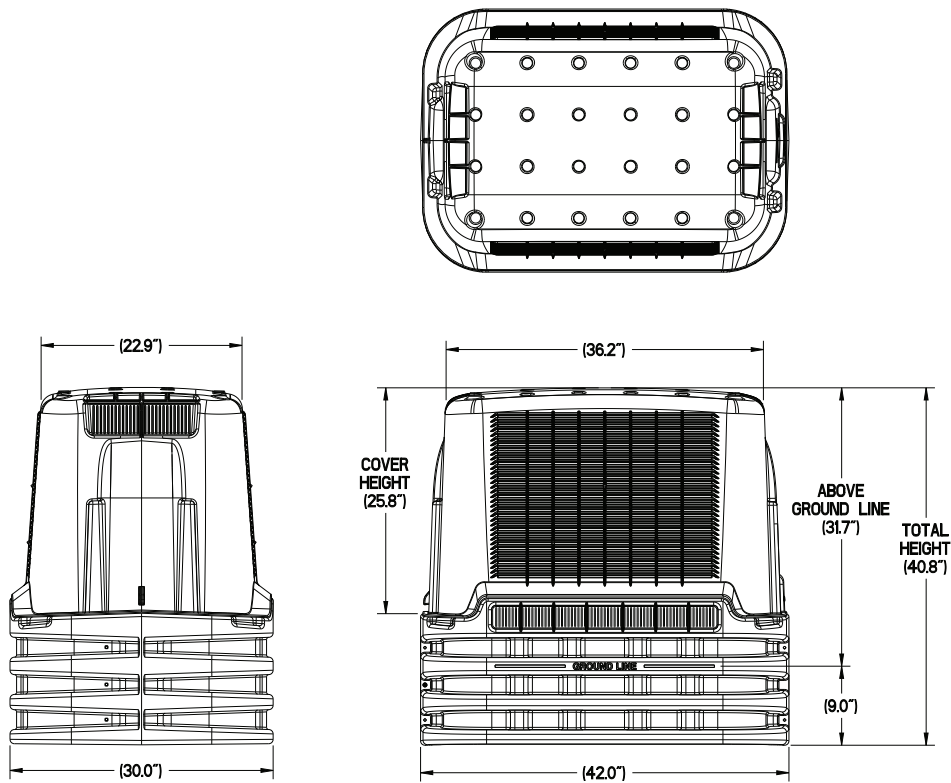
# Internal Bracket



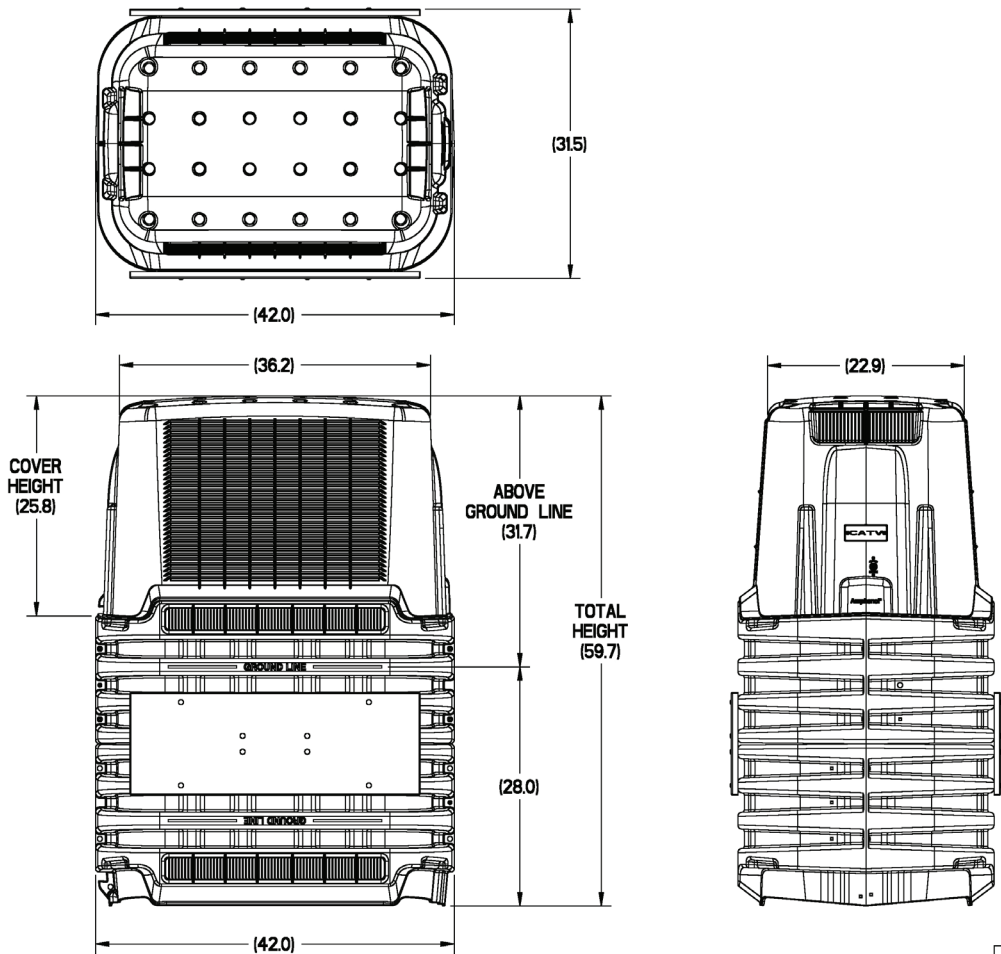
Front and Rear Views of Z14 low-profile pedestal with node and fiber storage bracket. Photos are shown with customer-supplied equipment and cabling installed (not included).

# Pedestal Dimensions

## Z14



## Z24



# Ordering Information

Part Number	Description	Pallet Qty.
Z14SS07-20007BK	Z14 36"x24" thermally optimized housing, light green dome, 12" below grade black base, hex-head lock, low profile node with fiber storage brackets	4
Z14SS07-40007BK	Z14 36"x24" thermally optimized housing, dark green dome, 12" below grade black base, hex-head lock, low-profile node with fiber storage brackets	4
Z24SS07-20007BK	Z24 36"x24" thermally optimized housing, light green dome, extended depth 28" below grade base, hex -head lock, low profile node with fiber storge brackets	2
Z24-BASE	Z24 base upgrade kit with 28" black base to convert Z14 to Z24	2
C216C-01	Hex-head 7/16" & 3/4" CAN wrench tool	



**Notes:**

- Pedestal Weight Z14: 69 lbs. each
- Pedestal Weight Z24: 117 lbs. each

Please contact your Charles account representative for additional pedestal options and colors.



**Charles Industries, LLC**  
An Amphenol Company  
1450 American Lane, 20th Floor, Schaumburg, IL 60173

 [mktserv@charlesindustries.com](mailto:mktserv@charlesindustries.com)  
 (847) 806-6300

