

Optical Hub Cabinets (OHC) provide fiber distribution to subscribers from a compact, environmentally protected outdoor terminal. OHC have been designed with flexibility in mind and support fusion, pre-terminated and field terminated feed and drop fibers. These PON terminals have space for multiple splitters for incremental growth. They may be pad mounted and are well suited for multi-dwelling unit (MDU) distribution in centralized or distributed Optical Network Terminals (ONT). The OHC 864 houses 72 feed/pass-thru adapters and 864 distribution adapters for fiber distribution to high density buildings with many potential subscribers.

OHC are constructed from powder-coated aluminum that is both durable and lightweight. The unit can be quickly installed by a single technician. Front and rear dual access doors are secured with low-profile, 216-tool quarter turn locks and padlock hasps for additional access control. A grounding bus bar with multiple grounding studs is provided.

MARKETS SERVED:

- ☒ Telecom / FTTX
- ☒ Utility
- ☐ Wireless
- ☒ Broadband Cable



OHC2-864 Enclosure

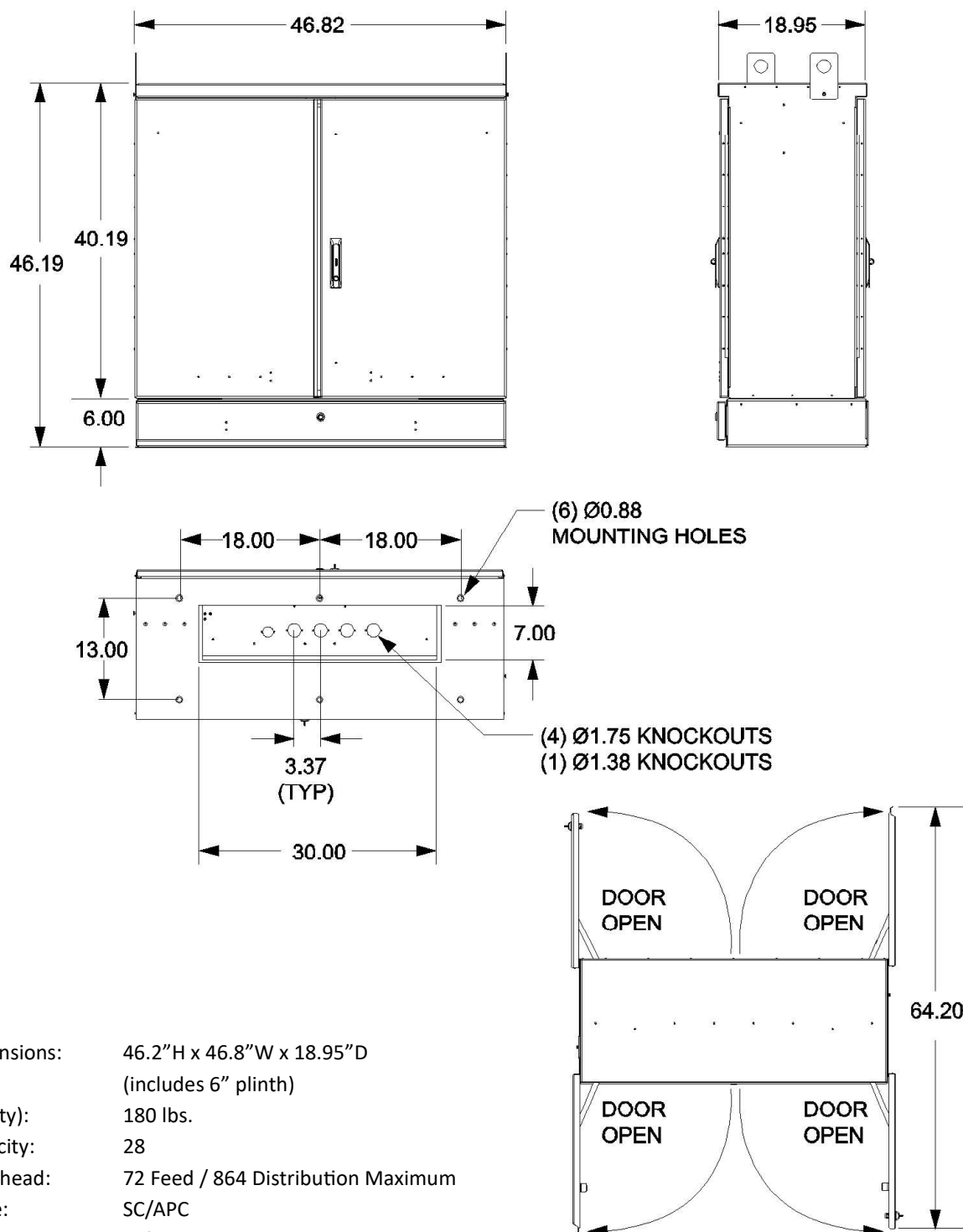
FEATURES

- Supports pre-terminated and field terminated feed and drop fibers
- Front and rear access doors are secured with low-profile, 216-tool quarter turn locks and padlock hasps for additional access control
- Durable and lightweight pad mount enclosure can be quickly installed
- Multiple cable entry locations are positioned at the bottom of the enclosure, allowing flexible placement of feed and distribution cables
- Fiber bend radius controls and routing guides ensure cable management and proper slack storage
- Charles Fiber Splitter Modules (CFSM) are available with optimized pigtail lengths
- Constructed from powder-coated aluminum
- Well suited for centralized split in a Passive Optical Network (PON)

OHC2-864 Optical Hub Cabinet

DIMENSIONAL VIEWS

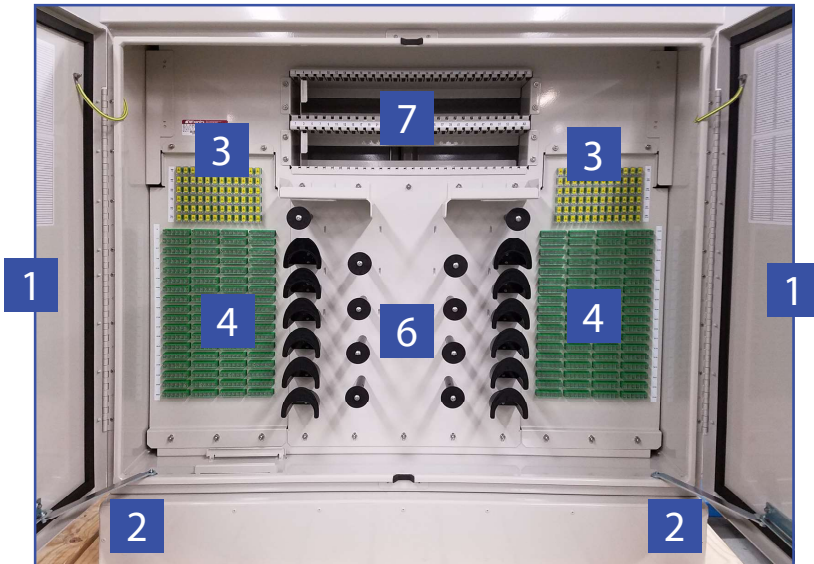
All dimensions given in inches.



Overall Dimensions:	46.2" H x 46.8" W x 18.95" D (includes 6" plinth)
Weight (empty):	180 lbs.
Splitter Capacity:	28
Scalable Bulkhead:	72 Feed / 864 Distribution Maximum
Adapter Type:	SC/APC
Finish:	Off-White Powder Coated

OHC2-864 Optical Hub Cabinet

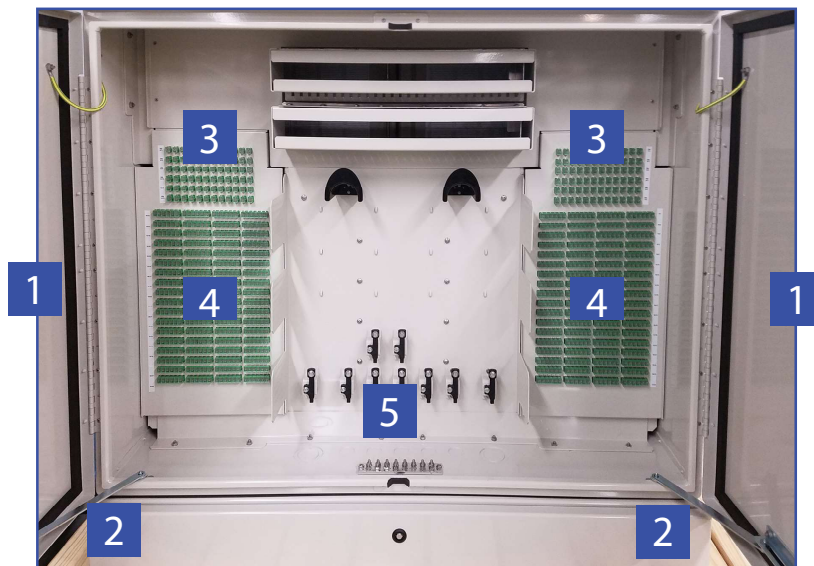
OHC2-864 SPLITTER COMPARTMENT



COMPARTMENT FEATURES

- 1 216-Tool Hex-Head Quarter Turn Lock with 3-Point Latch
- 2 Door Wind Latch
- 3 72 Feed / Pass-Thru Adapters
- 4 864 Subscriber Distribution Adapters
- 5 Cable Attachments
- 6 Fiber Management Spools
- 7 28 Splitter Module Holders

OHC2-864 CABLE COMPARTMENT

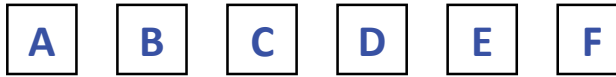


OHC2-864 cable compartment with factory installed pigtails

OHC2-864 Optical Hub Cabinet

PART NUMBER CONFIGURATION

OHC2-864



A. Quantity of Feed Adapters

E = 72

B. Quantity of Distribution Adapters

G = 864

C. Mounting Options

A = 6" High Plinth

D. Intentionally Left Blank

X = (Fill Space with "X")

E. Connector to Stub Cable Type*

A = OSP Dielectric LT, (1) Fiber Feed**, (3) 288 Fiber Distribution

B = OSP Armored LT, (1) Fiber Feed**, (3) 288 Fiber Distribution

C = OSP Dielectric Ribbon, (1) Fiber Feed**, (2) 432 Fiber Distribution

D = OSP Armored Ribbon, (1) Fiber Feed**, (2) 432 Fiber Distribution

F. Connector to Stub Cable Length

C = 100'

* All Stub options will be shipped with connector side installed into bulkhead

** Feed cable count matches feed adapter count

ACCESSORIES

Ordering Number

Description

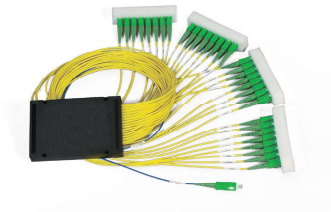
CFSM-FM2116AA-H

Charles Fiber Splitter Module, Dual 1x16, Pre-Connectorized SC/APC 2mm Yellow Jacketed Output Pigtailed, 2mm Blue Jacketed Input Pigtail

CFSM-FM1132AA-H

Charles Fiber Splitter Module, 1x32, Pre-Connectorized SC/APC 2mm Yellow Jacketed Output Pigtailed, 2mm Blue Jacketed Input Pigtail

Note: See our CFSM datasheet for more options.



Charles 1x32 Passive Splitter Module

- High quality, low insertion loss
- Bend insensitive jacketed fiber
- Right-sized drop length for better management

Charles Industries, LLC

An Amphenol Company

Voice: (847) 806-6300 • Email: mktsserv@charlesindustries.com

INNOVATIVE ENCLOSED SOLUTIONS™



©2022 Charles Industries, LLC • All Rights Reserved • Specifications Subject to Change

Customer Service: (847) 806-6300

D-OSP001-A22

charlesindustries.com