

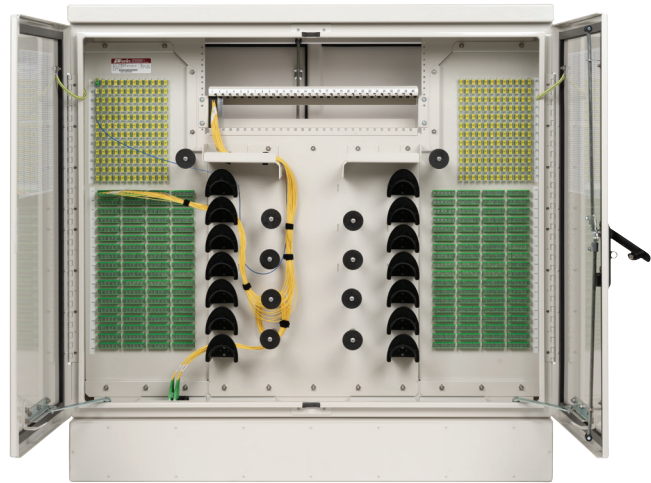
Optical Hub Cabinets (OHC) provide fiber distribution to subscribers from a compact, environmentally protected outdoor terminal. OHC have been designed with flexibility in mind and supports pre-terminated and field-terminated feed and drop fibers. These PON terminals have space for multiple splitters for incremental growth. They may be pad mounted and are well suited for delivering broadband services to both Multi-Dwelling Units (MDU) and Single-Family Units (SFU).

The OHC 864 houses 72 feed/pass-thru adapters and 864 distribution adapters for fiber distribution to high density buildings with many potential subscribers.

OHC are constructed from powder-coated aluminum that is both durable and lightweight. The unit can be quickly installed by a single technician. Front and rear dual access doors are secured with low-profile, 216-tool quarter turn locks and padlock hasps for additional access control. A grounding bus bar with multiple grounding studs is provided.

#### MARKETS SERVED:

- ☒ Telecom / FTTX
- ☒ Utility
- ☐ Wireless
- ☒ Broadband Cable



OHC2-864 Enclosure



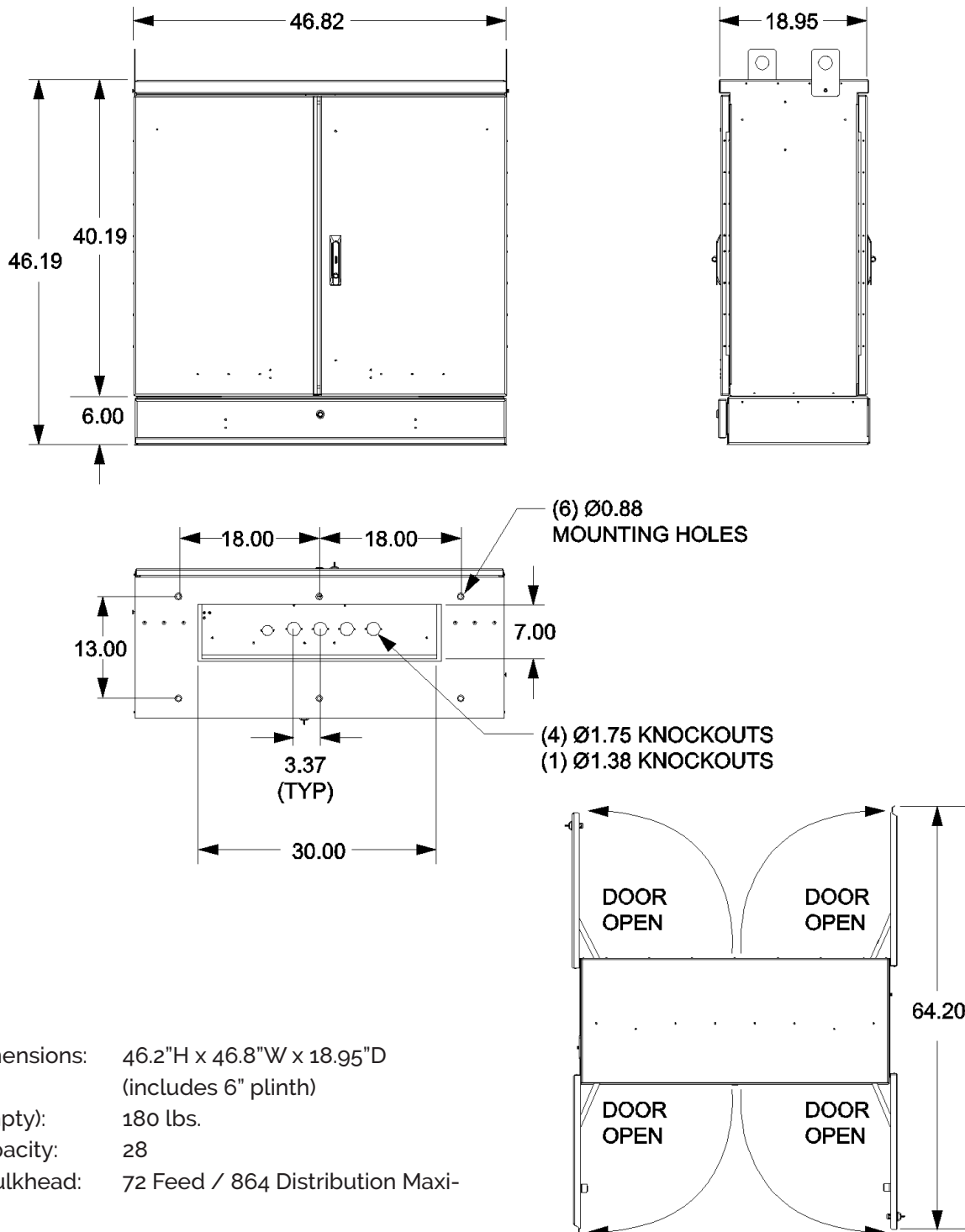
#### FEATURES

- BEAD/BABAA compliant product
- Supports pre-terminated and field terminated feed and drop fibers
- Front and rear access doors are secured with low-profile, 216-tool quarter turn locks and padlock hasps for additional access control
- Durable and lightweight pad mount enclosure can be quickly installed
- Multiple cable entry locations are positioned at the bottom of the enclosure, allowing flexible placement of feed and distribution cables
- Fiber bend radius controls and routing guides ensure cable management and proper slack storage
- Charles Fiber Splitter Modules (CFSM) are available with optimized pigtail lengths
- Constructed from powder-coated aluminum
- Well suited for centralized split in a Passive Optical Network (PON)

# OHC2-864 Optical Hub Cabinet

## DIMENSIONAL VIEWS

All dimensions given in inches



Overall Dimensions: 46.2"H x 46.8"W x 18.95"D  
(includes 6" plinth)

Weight (empty): 180 lbs.

Splitter Capacity: 28

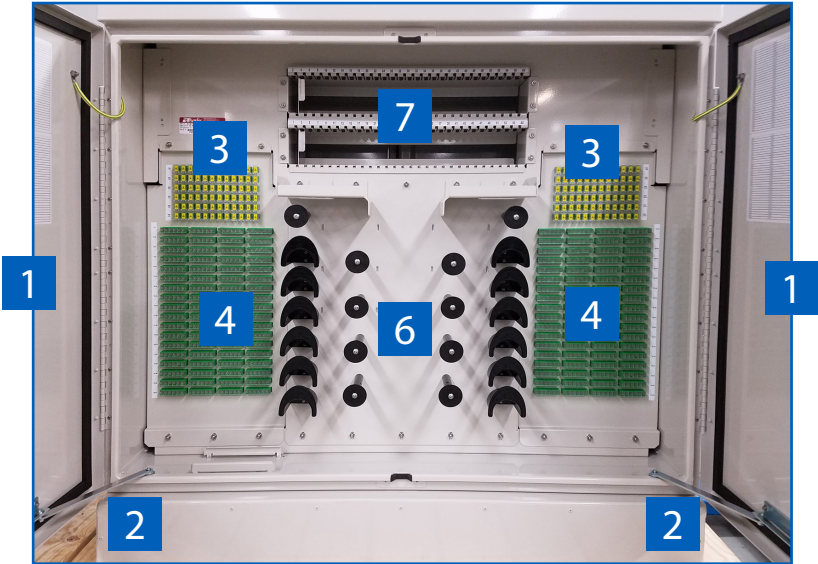
Scalable Bulkhead: 72 Feed / 864 Distribution Maximum

Adapter Type: SC/APC

Finish: Off-White Powder Coated

# OHC2-864 Optical Hub Cabinet

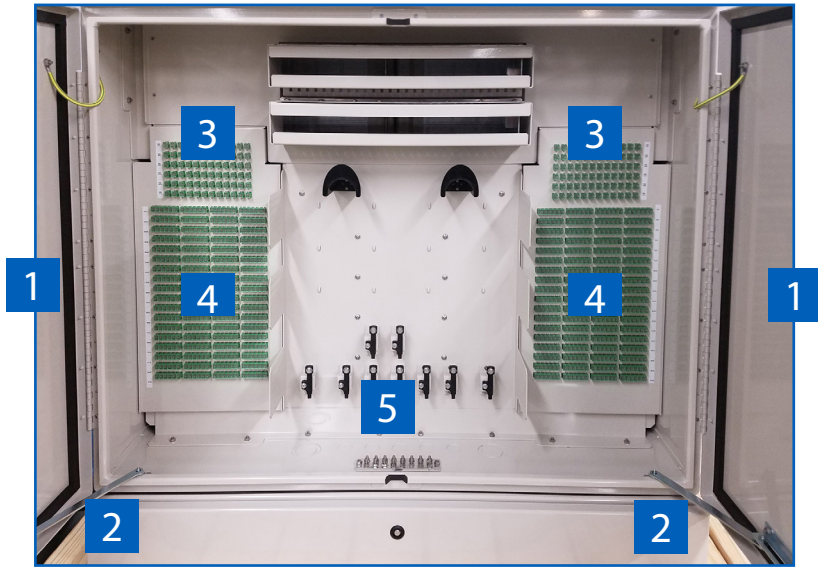
## OHC2-864 SPLITTER COMPARTMENT



### COMPARTMENT FEATURES

- 1 216-Tool Hex-Head Quarter Turn Lock with 3-Point Latch
- 2 Door Wind Latch
- 3 72 Feed / Pass-Thru Adapters
- 4 864 Subscriber Distribution Adapters
- 5 Cable Attachments
- 6 Fiber Management Spools
- 7 28 Splitter Module Holders

## OHC2-864 CABLE COMPARTMENT



OHC2-864 cable compartment with factory installed pigtails

# OHC2-864 Optical Hub Cabinet

## PART NUMBER CONFIGURATION

OHC2-864   **A**   **B**   **C**   **D**   **E**   **F**

**A. Quantity of Feed Adapters**

E = 72

**B. Quantity of Distribution Adapters**

G = 864

**C. Mounting Options**

A = 6" High Plinth

**D. Intentionally Left Blank**

X = (Fill Space with "X")

**E. Connector to Stub Cable Type\***

- A = OSP Dielectric LT, (1) Fiber Feed\*\*, (3) 288 Fiber Distribution
- B = OSP Armored LT, (1) Fiber Feed\*\*, (3) 288 Fiber Distribution
- C = OSP Dielectric Ribbon, (1) Fiber Feed\*\*, (2) 432 Fiber Distribution
- D = OSP Armored Ribbon, (1) Fiber Feed\*\*, (2) 432 Fiber Distribution

**F. Connector to Stub Cable Length**

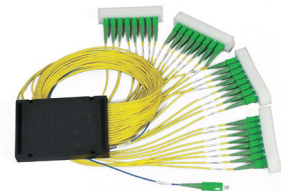
C = 100'

\* All Stub options will be shipped with connector side installed into bulkhead  
\*\* Feed cable count matches feed adapter count

## ACCESSORIES

Ordering Number	Description
CFSM-FM2116AA-H	Charles Fiber Splitter Module, Dual 1x16, Pre-Connectorized SC/APC 2mm Yellow Jacketed Output Pigtails, 2mm Blue Jacketed Input Pigtail
CFSM-FM1132AA-H	Charles Fiber Splitter Module, 1x32, Pre-Connectorized SC/APC 2mm Yellow Jacketed Output Pigtails, 2mm Blue Jacketed Input Pigtail
CPAD-BL3048CI86	53"x53"x36" Composite Combo Pad with 30"x24" split covers for Charles OHC-864.
TPAD-BL3048CI86	CPAD is tier 8 & TPAD is tier 15.
97-PAD-864	Poured Pad Template Kit for OHC-864 models

**Note:** See our CFSM datasheet for more options



**Charles 1x32 Passive Splitter Module**

- High quality, low insertion loss
- Bend insensitive jacketed fiber
- Right-sized drop length for better management

# OHC2-864 Optical Hub Cabinet - BEAD/BABAA Part Numbers



Ordering Number	Description
OHCU2-864DGAXCC	OHC864 48F/864D PAD RIB DE 100'
OHCU2-864DGAXAC	OHC864 48F/864D PAD LT DE 100'
OHCU2-864DGAXBC	OHC864 48F/864D PAD LT ARM 100'

**Note:** Contact Charles for alternative configurations.




Looking for other BABA compliant products for BEAD funded projects?  
Please inquire with us for more information.

**Charles Industries, LLC**

An Amphenol Company

1450 American Lane, 20th Floor, Schaumburg, IL 60173

 [mktserv@charlesindustries.com](mailto:mktserv@charlesindustries.com)

 (847) 806-6300

