

## Buried distribution pedestals designed for superior OSP protection of fiber optic splice and storage points



Pedlock® BDO Series Fiber Pedestals are a key element of any FTTP solution. In both greenfield and brownfield fiber deployments, BDO Pedestals provide easy access to branch and drop splices while protecting and storing loose buffer tube or ribbon fiber optic cables. The exclusive BDO fiber organizer allows technicians to mount splice trays and splitters securely with ample access to perform in-field splicing.

BDO Pedestals feature a non-metallic construction that offers superior OSP protection against floods, fire, dirt, insects and impact. An expanded-capacity split base\* is designed to easily install around conduit-fed cable bundles in new construction. BDO pedestals are an ideal solution for rehabilitation of metallic enclosures, and protection of co-located copper/fiber distribution points.

### MARKETS SERVED:

- ☒ Telecom / FTTH
- ☒ Utility
- ☐ Wireless
- ☒ Broadband Cable



BDO-EG  
(Fiber only)



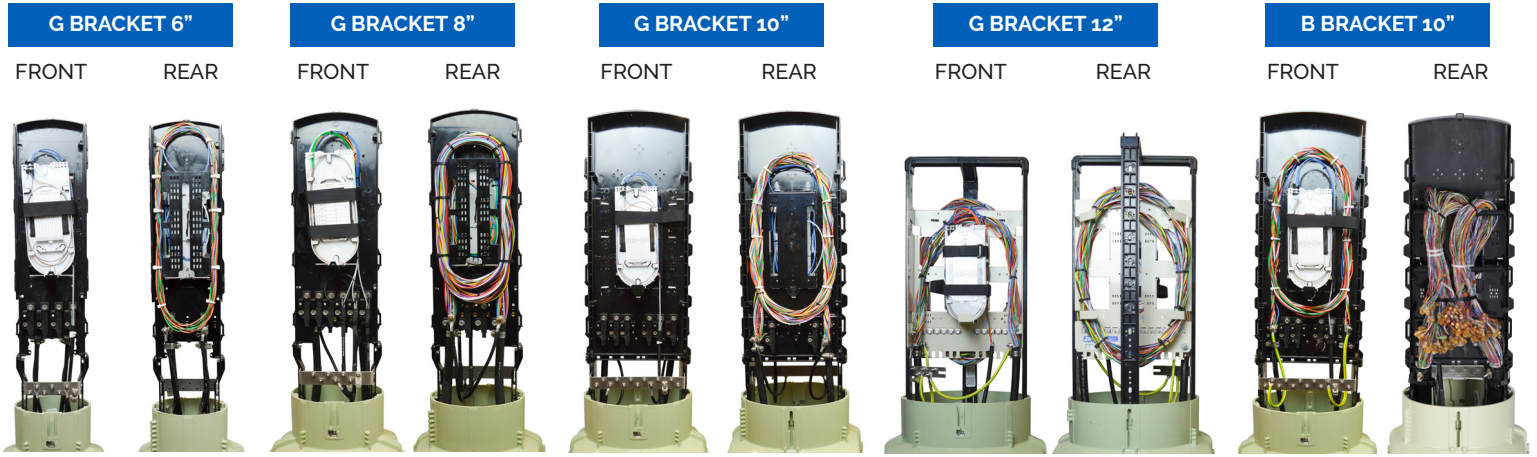
BDO-EB  
(Copper/Fiber)

### FEATURES

- BEAD/BABAA compliant product
- Non-metallic PVC construction won't rust, corrode, chip or fade. Internal components are protected from floods, fires, and wind-blown dust and debris
- Two splice bracket options provide users with a choice between loose buffer tube or ribbon fiber splicing (G Bracket) or copper/fiber splicing in a single enclosure (B Bracket)
- Fiber organizer backboards accommodate all commonly used fiber splice trays with a 4"x9" footprint, 10" diameter and larger peds also accept 4"x12" or 6"x15" trays
- Two-piece expanded-capacity "split" base makes it easy for technicians to place the pedestal over conduit-fed cable bundles, and are an ideal solution for rehabilitating metallic enclosures\*
- Bonding/grounding bar meets all RDUP requirements for bonding and grounding of service wires and cable sheaths
- Lift-off dome provides 360° access to internal splicing area
- Dome attaches securely to the base using a self-locking 216-hex head bolt locktrays
- Vault mount base available

\* Expanded-capacity split base is standard on all pedestals except BDO 7 (14"), which features a one-piece round base.

# Product Brackets



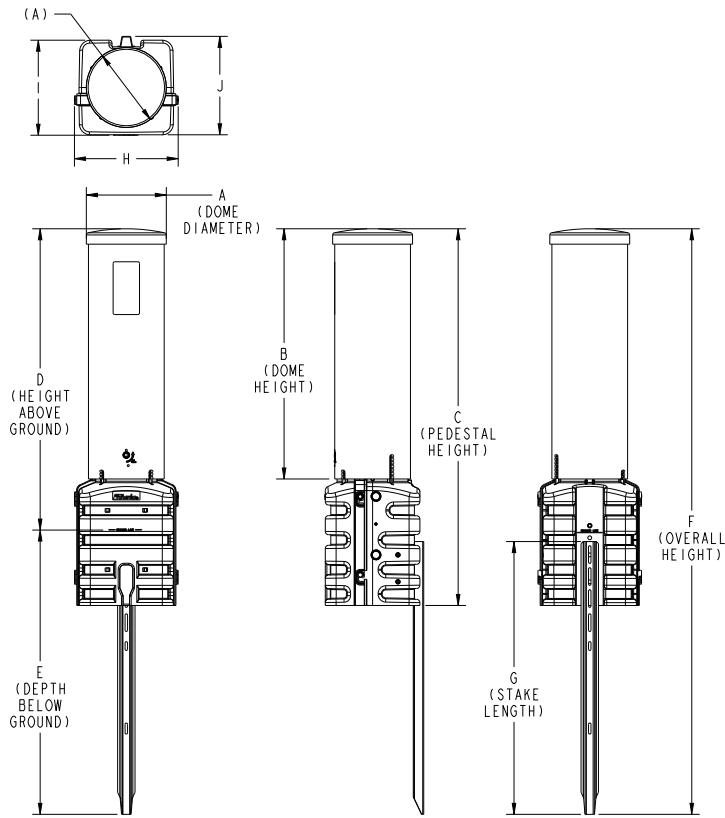
Fiber-Only Drop and Branch Splices  
(for 6", 8", 10" and 12" diameter pedestals only)

Fiber & Copper  
Co-Located Splices (for 10"  
diameter pedestals only)

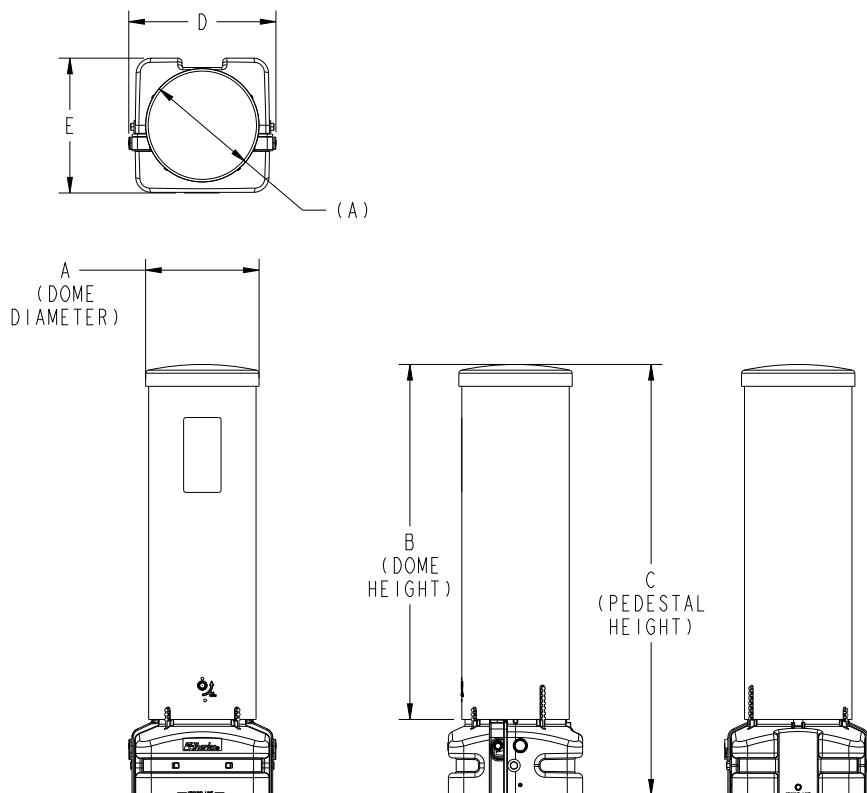
# Product Dimension

## Series 2 Split Base with Stake Dimensions

All dimensions are in inches



Size	A	B	C	D	E	F	G	H	I	J
6	7.4	28.7	43.1	34.5	31.3	65.9	31	10.8	9.8	9.9
8	9.1	28.4	42.8	34.2	31.4	65.6	31	11.8	10.8	10.9
10	11.7	30.7	45.6	37	31.4	68.4	31	13.8	12.8	12.9
12	13.4	28.8	43.7	35.1	31.3	66.4	31	16.1	15.1	15.1



Size	A	B	C	D	E
6	7.4	28.7	34.7	10.8	9.8
8	9.1	28.4	34.5	11.8	10.8
10	11.7	30.7	37.2	13.8	12.8
12	13.6	28.8	35.2	16.1	15.1

## Product Specifications

### G BRACKET BDO PEDESTALS (GREENFIELD INSTALLATIONS)

Part Number		BDO203-EG	BDO204-EG	BDO205-EG	BDO 6-EG
Diameter		6"	8"	10"	12"
Drop Quantity		8	8	11	24
12 Fiber Ribbon Storage (Opening 12ft±2ft)		24 Ribbons	36 Ribbons	72 Ribbons	72 Ribbons
Loose Tube Storage (Opening 12ft±2ft)		8 Tubes	12 Tubes	24 Tubes	32 Tubes
Splice Tray Capacity		4 (4"x9")	6 (4"x9")	7 (4"x9") or 5 (6"x15")	9 (4"x9") or 8 (6"x15")
Maximum Splice Capacity*	12 Fibers per Tray	48	72	84	108
	24 Fibers per Tray	96	144	168	216
	48 Fibers per Tray***	N/A	N/A	240	384
	144 FOSC A/B Fiber Ribbon Tray**	144	288	432	576

### B BRACKET BDO PEDESTALS (BROWNFIELD INSTALLATIONS)

Part Number		BDO205-EB
Diameter		10"
Drop Quantity		16
12 Fiber Ribbon Storage (Opening 12ft±2ft)		48 Ribbons
Loose Tube Storage (Opening 12ft±2ft)		24 Tubes
Splice Tray Capacity		5 (4"x9") or 4 (6"x15")
Maximum Splice Capacity*	12 Fibers per Tray	60
	24 Fibers per Tray	120
	48 Fibers per Tray***	192
	144 FOSC A/B Fiber Ribbon Tray**	288
Copper Splice Capacity		300 pairs

#### Notes:

\* Maximum splice capacities shown are for cable-to-cable splices. Overall splice capacity is reduced as drop splices are introduced.

For drop splices, Charles recommends using a 12 Fiber Tray with a maximum of 6 drops per tray.

\*\* Capacities shown achieved using FOSC A/B Ribbon Fiber Tray(s).

\*\*\* Capacities shown achieved using FOSC D Fiber Tray(s).

# Ordering Information

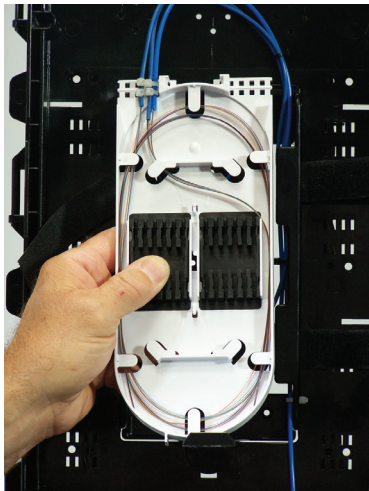


Charles Part #	Description
BDO203-EG	6" dia. pedestal, expanded-capacity split base, G bracket (fiber only), bond bar
BDO204-EG	8" dia. pedestal, expanded-capacity split base, G bracket (fiber only), bond bar
BDO205-EB	10" dia. pedestal, expanded-capacity split base, B bracket (fiber/copper), bond bar
BDO205-EG	10" dia. pedestal, expanded-capacity split base, G bracket (fiber only), bond bar
BDO 6-EG	12" dia. pedestal, expanded-capacity split base, G bracket (fiber only), bond bar
BDO203-EGT	6" dia. pedestal, expanded-capacity split base, G bracket (fiber only), bond bar, 4"x9" splice tray
BDO204-EGT	8" dia. pedestal, expanded-capacity split base, G bracket (fiber only), bond bar, 4"x9" splice tray
BDO205-EGT	10" dia. pedestal, expanded-capacity split base, G bracket (fiber only), bond bar, 4"x9" splice tray
BDO205-EBT	10" dia. pedestal, expanded-capacity split base, B bracket (fiber/copper), bond bar, 4"x9" splice tray
BDO 6-EGT	12" dia. pedestal, expanded-capacity split base, G bracket (fiber only), bond bar, 4"x9" splice tray
BDO203-EVG	6" dia. pedestal, expanded square vault mount base with mounting hardware, moisture pad, G bracket (fiber only), bond bar
BDO204-EVG	8" dia. pedestal, expanded square vault mount base with mounting hardware, moisture pad, G bracket (fiber only), bond bar
BDO205-EVG	10" dia. pedestal, expanded square vault mount base with mounting hardware, moisture pad, G bracket (fiber only), bond bar
BDO 6-EVG	12" dia. pedestal, expanded square vault mount base with mounting hardware, moisture pad, G bracket (fiber only), bond bar




## Pedestal Accessories

97-FIBR24TRAY	Charles 24 Fiber Splice Tray, 4"x9"
UMS36-STD	36" Metal Mounting Stake w/hardware
UMS42-STD	42" Metal Mounting Stake w/hardware
UMB102A	Universal Pole Mount Bracket w/hardware
BDO GLBBRKT	Grade Level Box Mount Bracket Kit (6" to 12" size)
97-RIBNTRAY144	Tyco® FOSC A/B ribbon splice tray (144 fibers), 1 each
97-RIBNTUBEKIT	3M® ribbon transportation tube kit, 3 ft., 10 ea.
97-RIBNCLIPKIT	Ribbon saddle clip kit (6" and 8" size), 40 ea.
97-RIBNCLIPLG	Ribbon saddle clip kit large (10" and 12" size), 40 ea



Charles 97-FIBR24TRAY is easily removable from BDO pedestals, without disturbing existing splices.

**Charles Industries, LLC**  
An Amphenol Company  
1450 American Lane, 20th Floor, Schaumburg, IL 60173

 [mktserv@charlesindustries.com](mailto:mktserv@charlesindustries.com)  
 (847) 806-6300

