

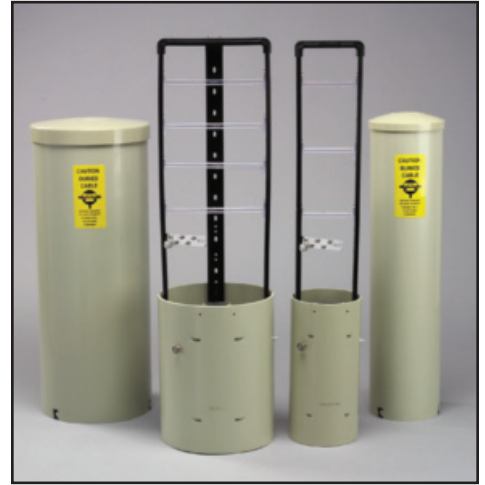
Pedlock® BD Series Pedestals

Non-metallic copper buried distribution splice pedestals

Charles Pedlock line of non-metallic, non-conductive pedestals has proven itself in the field for more than 30 years. Pedlock BD Series Pedestals provide the flexibility, durability and reliability to be an all-purpose copper splice closure.

The BD Series was designed to provide a variety of full feature, non-metallic pedestals with the lowest total cost of ownership. Charles' engineering team listened to our customers and responded by creating an entire line of pedestals designed for ease of installation and maintenance in addition to providing the highest standard of environmental protection.

BD Series pedestals are available in 5 sizes: BD 3 (6" dia.), BD 4 (8" dia.), BD 5 (10" dia.), BD 6 (12" dia.) and BD 7 (14" dia.). Charles' BD pedestals feature a common dome height across all sizes, allowing technicians to standardize the length of exposed cable loops and cable ends during cable placement.



Pedlock BD Round Base Pedestals



BD 3, BD 4, BD5 & BD7

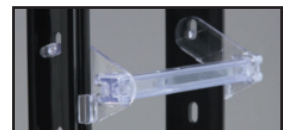
- Designed to house and protect small to large pair count terminations and splices
- Non-metallic, lightweight PVC construction resists corrosion, impact, fire, floods, chemicals and insects
- Rigid, non-conductive splice bracket easily secures to rail mounting system in pedestal base
- BD5 and BD7 pedestals include a third bracket leg on the splice bracket for increased stability and support of heavy loads
- Offset ladder bars provide extra splicing capacity and are repositionable for added convenience
- 5-post metal grounding bar with ground lug designed to meet all industry grounding requirements
- Drop wire channel facilitates wire management
- Lift-off dome allows 360° access to internal areas



Non-Conductive Bracket



Rail Mounting System



Offset Ladder Bars



5-Post Grounding Bar



Drop Wire Channel

Pedlock BD-E Square Base Pedestals

BD 3-E, BD 4-E, BD 5-E, BD 6-E

- Non-metallic PVC construction won't rust, corrode, chip or fade. Internal equipment is protected from floods, fires, and wind-blown dust and debris
- Expanded-capacity base increases useable area and easily accepts conduit bundles. The base's design increases pedestal stability and eliminates the need for metallic mounting stakes in most soil conditions
- Split base design allows for easy and speedy access to cable/wire entrance area. Four 1¼" circular knockouts and one 4½" x 1½" rectangular drop cable access port knockout below the ground-line provide easy exits for service wires without disturbing gravel or pedestal base fill
- Two splice bracket options (Universal U-Backboard and Splice S-Bracket) provide users with a choice in splicing arrangements.
- Bonding/grounding bars meet all industry requirements for proper bonding and grounding of service wires and cable sheaths
- Self-locking dome with positive alignment guides ensures quick opening and takes the guesswork out of secure closing. A 216-cupped bolt lock prevents unauthorized entry

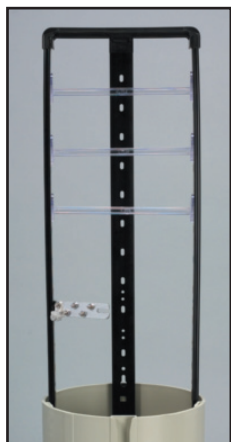


Square (Conduit) Base Features



- Split design allows pedestal to be easily placed around existing splice points, ideal for rehabilitation of metal enclosures
- Base design increases pedestal stability in loose soils, eliminates the need for a mounting stake in most installations, and prevents frost heave
- Rail mount system secures or releases splice bracket to base quickly and easily without the need of tools
- Five service wire knockouts (four circular and one rectangular) provide multiple service wire exit points
- Stake mounting holes on three of the base's sides provide flexibility in placement of mounting stake
- Drop wire channel provides easy drop installations without opening base and disturbing installed gravel and moisture barrier
- 216-cupped bolt locks and shoulder pin attachments join base halves
- Embossed ground line helps installers ensure proper placement

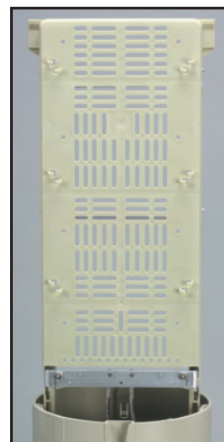
Bracket Options for Square (Conduit) Bases



S-Bracket (Splice)

- Open ladder bar architecture provides the maximum space for cable splices
- Ladder bars are repositionable
- Mounts to base of pedestal using rail mount system (no tools required)
- Ground bar meets industry grounding requirements

Available for BD 3-E, BD 4-E, BD 5-E, and BD 6-E pedestals



U-Backboard (Universal)

- Front panel features a universal hole pattern for mounting terminal blocks, load coil cases, etc.
- Back panel features repositionable ladder bars to support cable splices
- Mounts to base of pedestal using rail mount system (no tools required)
- Ground bar meets industry grounding requirements

Available for BD 3-E, BD 4-E and BD 5-E pedestals

Pedlock BD and BD-E Series Options & Accessories



Integral Stake Base

Allows technicians to easily place pedestals in all types of soil conditions with no additional hardware requirements. Constructed of heavy-duty PVC to eliminate corrosion in acidic soil conditions.

Available for BD 3, BD 4, BD 5 and BD 7 round base pedestals only.



Terminal Backboard (Magnum)

Designed for mounting load coils, distribution terminal blocks and other internal hardware. Non-metallic PVC construction with metal grounding plate.

Available for BD 3, BD 4 and BD 5 round base pedestals only.

Hi-Viz Kap



Provides increased visibility to prevent damage by mowers or vehicles for pedestals obscured by tall grass or placed in roadsides.

Available for BD 3, BD 4, and BD 5 round base pedestals; and BD 3-E, BD 4-E, BD 5-E and BD 6-E square base pedestals.



Universal Mounting Stakes & Pole Mount Brackets

UMS provide additional stability for direct buried pedestals, while pole mount brackets secure pedestals to telephone poles, utility poles, and fence post. Steel construction for long service-life. UMS have powder coated finish. All required mounting hardware is included.

Available for all BD and BD-E pedestals; not compatible with integral stake option.

BD PEDESTAL SPLICE CAPACITY GUIDELINES

Pedestal Type	Maximum straight splice pair capacity using single pair connectors or multiple pair splice modules		Maximum load splice pair capacity using single pair connectors or multiple pair splice modules	
	RUS	Charles*	RUS	Charles*
BD 3	100 pair	400 pair	50 pair	200 pair
BD 4	200 pair	600 pair	100 pair	300 pair
BD 5	600 pair	900 pair	300 pair	450 pair
BD 6	N/A	1,500 pair	N/A	750 pair
BD 7	1,200 pair	3,000 pair	600 pair	1,200 pair

*Straight splice capacity

Ordering Information

PEDLOCK BD ROUND BASE PEDESTALS

Part Number	Product Description
BD 3	BD 3 6" Pedestal, S-Bracket, drop channel, 5-post ground bar w/ground lug
BD 3I	BD 3 6" Pedestal, S-Bracket, drop channel, 5-post ground bar w/ground lug, integral stake base
BD 3H	BD 3 6" Pedestal, Terminal Backboard, drop channel, 5-post ground bar w/ground lug
BD 3IH	BD 3 6" Pedestal, Terminal Backboard, drop channel, 5-post ground bar w/ground lug, integral stake base
BD 4	BD 4 8" Pedestal, S-Bracket, drop channel, 5-post ground bar w/ground lug
BD 4I	BD 4 8" Pedestal, S-Bracket, drop channel, 5-post ground bar w/ground lug, integral stake base
BD 4H	BD 4 8" Pedestal, Terminal Backboard, drop channel, 5-post ground bar w/ground lug
BD 4IH	BD 4 8" Pedestal, Terminal Backboard, drop channel, 5-post ground bar w/ground lug, integral stake base
BD 5	BD 5 10" Pedestal, S-Bracket, drop channel, 5-post ground bar w/ground lug
BD 5I	BD 5 10" Pedestal, S-Bracket, drop channel, 5-post ground bar w/ground lug, integral stake base
BD 5H	BD 5 10" Pedestal, Terminal Backboard, drop channel, 5-post ground bar w/ground lug
BD 5IH	BD 5 10" Pedestal, Terminal Backboard, drop channel, 5-post ground bar w/ground lug, integral stake base
BD 7	BD 7 14" Pedestal, S-Bracket, drop channel, 5-post ground bar w/ground lug
BD 7I	BD 7 14" Pedestal, S-Bracket, drop channel, 5-post ground bar w/ground lug, integral stake base

PEDLOCK BD SQUARE (CONDUIT) BASE PEDESTALS

Part Number	Product Description
BD 3-E	BD 3 6" Pedestal, square base, S-Bracket, drop channel, 5-post bond bar w/ground lug
BD 3-EU	BD 3 6" Pedestal, square base, U-Backboard, drop channel, 5-post bond bar w/ground lug
BD 4-E	BD 4 8" Pedestal, square base, S-Bracket, drop channel, 5-post bond bar w/ground lug
BD 4-EU	BD 4 8" Pedestal, square base, U-Backboard, drop channel, 5-post bond bar w/ground lug
BD 5-E	BD 5 10" Pedestal, square base, S-Bracket, drop channel, 5-post bond bar w/ground lug
BD 5-EU	BD 5 10" Pedestal, square base, U-Backboard, drop channel, 5-post bond bar w/ground lug
BD 6-E	BD 6 12" Pedestal, square base, S-Bracket, drop channel, 5-post bond bar w/ground lug

PEDESTAL ACCESSORIES

Part Number	Product Description
97-001905-A	6" Splice Bars (pkg. 30) – Magnum Backboard
97-001906-A	8" Splice Bars (pkg. 30) – Magnum Backboard
97-001906-A	10" Splice Bars (pkg. 30) – Magnum Backboard
97-500501-A	12" Insulated Ground Braids (pkg. 50)
97-500502-A	18" Insulated Ground Braids (pkg. 50)
97-500512-A	Ground Lug (pkg. 100)
97-PKOR06-A	6" Hi-Viz Kap (pkg. 50)
97-PKOR08-A	8" Hi-Viz Kap (pkg. 50)
97-PKOR10-A	10" Hi-Viz Kap (pkg. 25)
PK-HV-OR-12	12" Hi-Viz Kap (pkg. 25)
97-500503-A	4" Splice Bars (pkg. 50) – S-Bracket
97-500504-A	6" Splice Bars (pkg. 50) – S-Bracket & Universal
97-500505-A	8" Splice Bars (pkg. 50) – S-Bracket & Universal
97-500506-A	10" Splice Bars (pkg. 50) – S-Bracket & Universal
97-500507-A	12" Splice Bars (pkg. 50) – S-Bracket
97-500508-A	14" Splice Bars (pkg. 50) – S-Bracket

MOUNTING STAKES

Mounting stakes (or pole-mount brackets) are available for all pedestals without integral stake bases. Please specify your mounting preference when ordering:

Part Number	Product Description
UMS30-STD	30" Steel Mounting Stake and Hardware
UMS42-STD	42" Steel Mounting Stake and Hardware
UMB102A	Pole Mounting Bracket and Hardware



INNOVATIVE ENCLOSED SOLUTIONS™



Dependable Solutions, Superior Support

- Field-proven and unequaled 24-hour technical support
- Individualized application consultation
- Superior quality (ISO 9001/TL 9000 registered)

Visit our website at <http://www.charlesindustries.com>

Charles Industries, LLC
An Amphenol Company

Voice: (847) 806-6300
Fax: (847) 806-6231
E-mail: mktsterv@charlesindustries.com

