

Application Overview – Dual T1 Mode

Application: Dual T1 Mode

Customer Solutions: Enterprise, Campus, ITCOs, CLECs.

Description: This solution allows customers to connect two independent T1 lines to the 360-80 Intelligent Channel Bank (ICB) to provide for a total of over 3Mbps of bandwidth.¹

The 'Dual T1' mode utilizes the T1 interfaces of the SNMP T1 Controller card and the Secondary T1 Controller card allowing the 360-80 ICB to be connected to two different T1 facilities.

See **Figure 1.** for a typical configuration where the 360-80 ICB is connected to two other 360-80 systems.

In this configuration it is possible to provide network management for multiple 360-80s over the T1 links by connecting a PC with network management software.

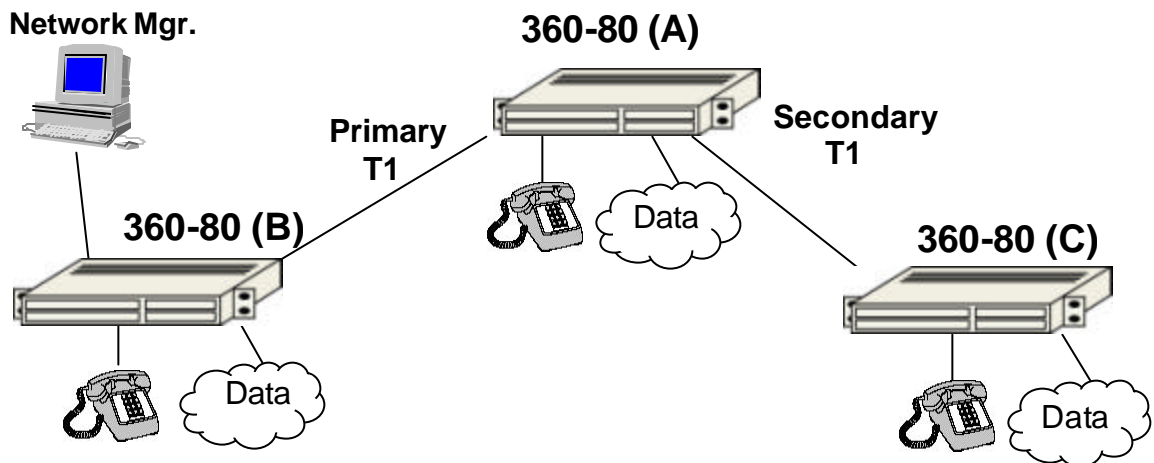


Figure 1. Independent Dual T1 Mode

See **Figure 2.** for an example of the dual T1 mode bank communicating with a single 360-80 ICB. For network management over the T1 link with this configuration, the primary T1 of one of the 360-80s must be connected to the secondary T1 of the other 360-80 system.

¹ Because of physical card limitations, requires use of 56/64xN data card to fully utilize bandwidth.

Network Mgr.

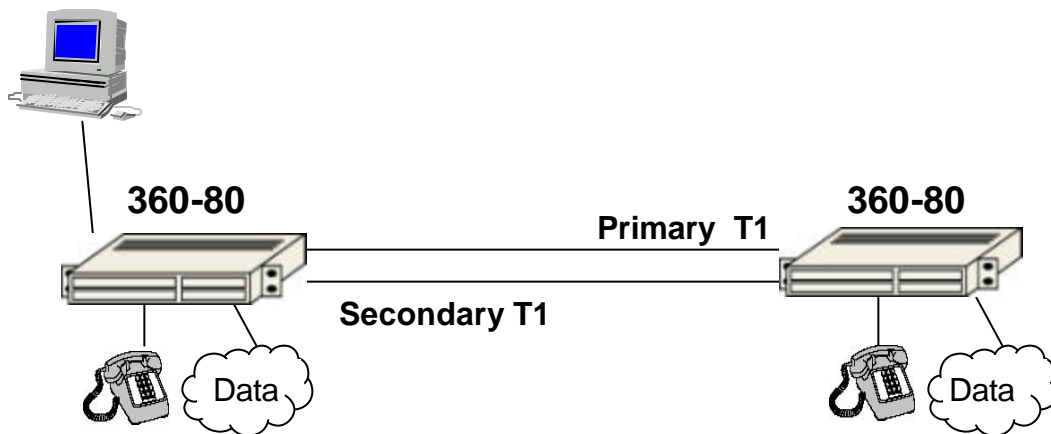


Figure 2. Combined Dual T1 Mode

Benefits:

- Allows customers to share T1 bandwidth for both voice and data applications
- Cost effective solution
- Simple to install and operate
- Supports network management of solution

Further Information:

Further information on Charles Industries products may be found at:
<http://www.charlesindustries.com>