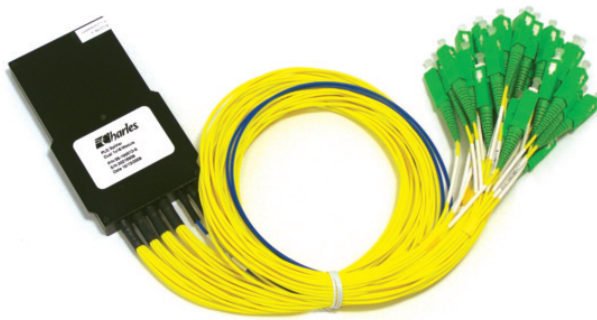


# Charles Fiber Splitter Modules (CFSM)

**Plug & play splitter modules used in enclosures and pedestals to split the optic signal in passive optical networks (PON)**



**1x16 and 1x32 CFSM-FP Splitters**  
Fit Charles Fiber Flexibility Pedestals (CFFP)



**1x8, 1x16, 1x32 and 2x32 CFSM-FM Splitters**  
Fit Charles Fiber Interconnect Terminals (CFIT),  
Fiber Building Terminals (CFBT),  
and Flex Compact Hubs (FCH)

## Specifications

Charles Part Number	UoM	CFSM-FP1132AA	CFSM-FP1116AA CFSM-FP2116AA	CFSM-FM1108AA	CFSM-FM1116AA	CFSM-FM1132AA	CFSM-FM1232A
Split Ratio		1 x 32	1 x 16	1 x 8	1 x 16	1 x 32	2 x 32
Platform Compatibility		CFFP	CFFP	CFIT/CFBT/FCH	CFIT/CFBT/FCH	CFIT/CFBT	CFIT/CFBT
Operating Wavelengths	nm	1260-1650					
Insertion Loss (Max)*	dB	16.8	13.7	11.2	14.2	16.9	18.0
Uniformity	dB	1.3	1.0	0.8	1.0	1.4	1.8
Return Loss	dB	≥55					
Directivity	dB	≥55					
Polarization Dependent Loss	dB	0.30		0.20	0.30		0.45
Temperature							
Operating	°C	-40° to +85°					
Storage	°C	-40° to +85°					
Humidity							
Operating	%RH	5 to 95					
Storage	%RH	5 to 95					
Fiber Type		ITU-T G657 A.1					
Connectors		SC/APC					
Jacketing							
Input Pigtail		2mm, blue					(x2) 2mm, blue
Output Pigtails		2mm, yellow					2mm, yellow
Pigtail Length							
Input	in.	26 (+0/-3)	26 (+0/-3)	33 (+0/-3)	33 (+0/-3)	33 (+0/-3)	33 (+0/-3)
Output	in.	29 (+0/-3)	29 (+0/-3)	33 (+0/-3)	33 (+0/-3)	33 (+0/-3)	33 (+0/-3)
Module Size (LxWxD)	in.	2.8 x 0.5 x 4.9	2.8 x 0.5 x 4.9	4.7 x 0.7 x 3.2	4.7 x 0.7 x 3.2	4.7 x 0.7 x 3.2	4.7 x 0.7 x 3.2
Compliance		GR-1221-CORE GR-1209-CORE					

\* Loss values provided do not include connectors.  
Connector loss = 0.3dB typical.



# CFSM Ordering Information

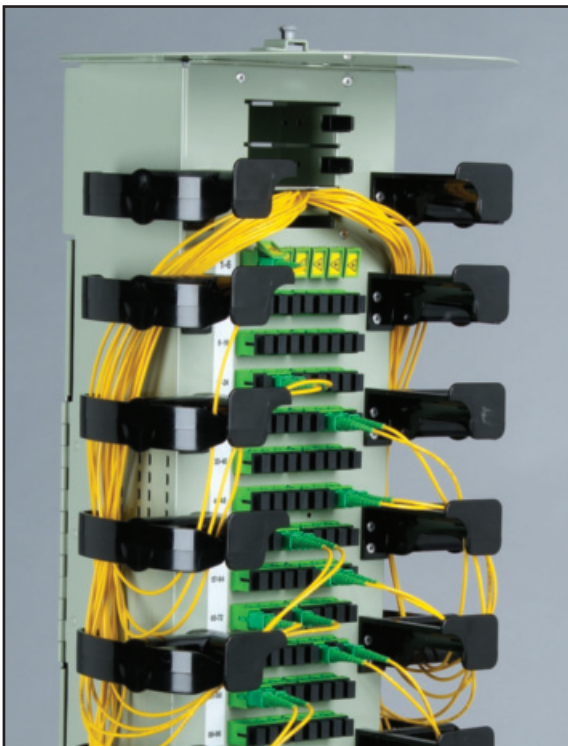
<u>Charles Part Number</u>	<u>Description</u>
----------------------------	--------------------

### For Charles Fiber Flexibility Pedestals (CFFP)

CFSM-FP1132AA	Charles Fiber Splitter Module, 1x32, SC/APC
CFSM-FP2116AA	Charles Fiber Splitter Module, dual 1x16, SC/APC
CFSM-FP1116AA	Charles Fiber Splitter Module, 1x16, SC/APC

### For Charles Fiber Interconnect Terminals (CFIT), Building Terminals (CFBT), and Flex Compact Hub (FCH)

CFSM-FM1108AA	Charles Fiber Splitter Module, 1x8, SC/APC
CFSM-FM1116AA	Charles Fiber Splitter Module, 1x16, SC/APC
CFSM-FM1132AA	Charles Fiber Splitter Module, 1x32, SC/APC
CFSM-FM1232AA	Charles Fiber Splitter Module, 2x32, SC/APC



Charles Fiber Splitter Module (CFSM-FP) in a Charles Fiber Flexibility Pedestal (CFFP).



Charles Fiber Splitter Module (CFSM-FM) in a Charles Fiber Building Terminal (CFBT).



INNOVATIVE ENCLOSED SOLUTIONS™




## Dependable Solutions, Superior Support

- Field-proven and unequalled 24-hour technical support
- Individualized application consultation
- Superior quality (ISO 9001/TL 9000 registered)

Visit our website at <http://www.charlesindustries.com>

Charles Industries, Ltd. Voice: (847) 806-6300  
Telecommunications Group Fax: (847) 806-6231  
E-mail: [mktserv@charlesindustries.com](mailto:mktserv@charlesindustries.com)



 is a registered trademark of Charles Industries, Ltd.

D-OSP152-G18