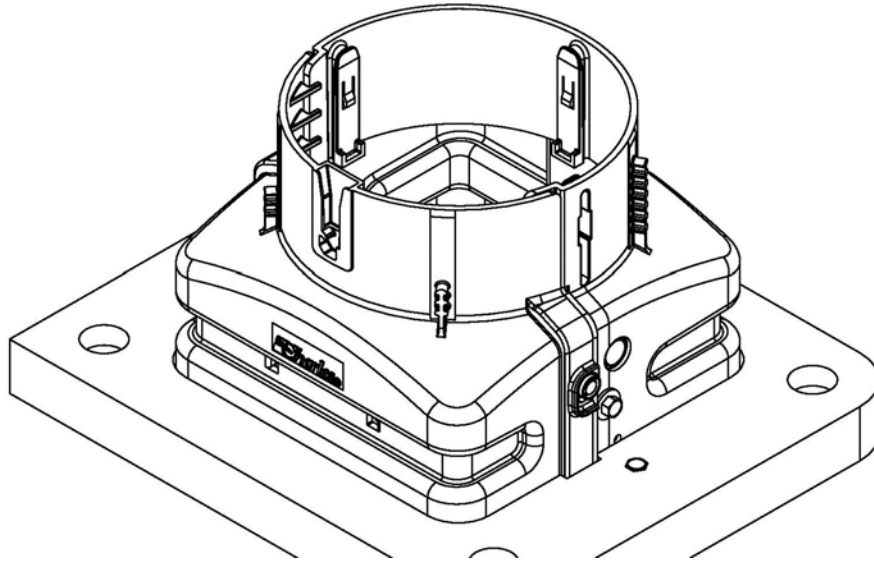


Installation Instructions: Vault Mount Square Base

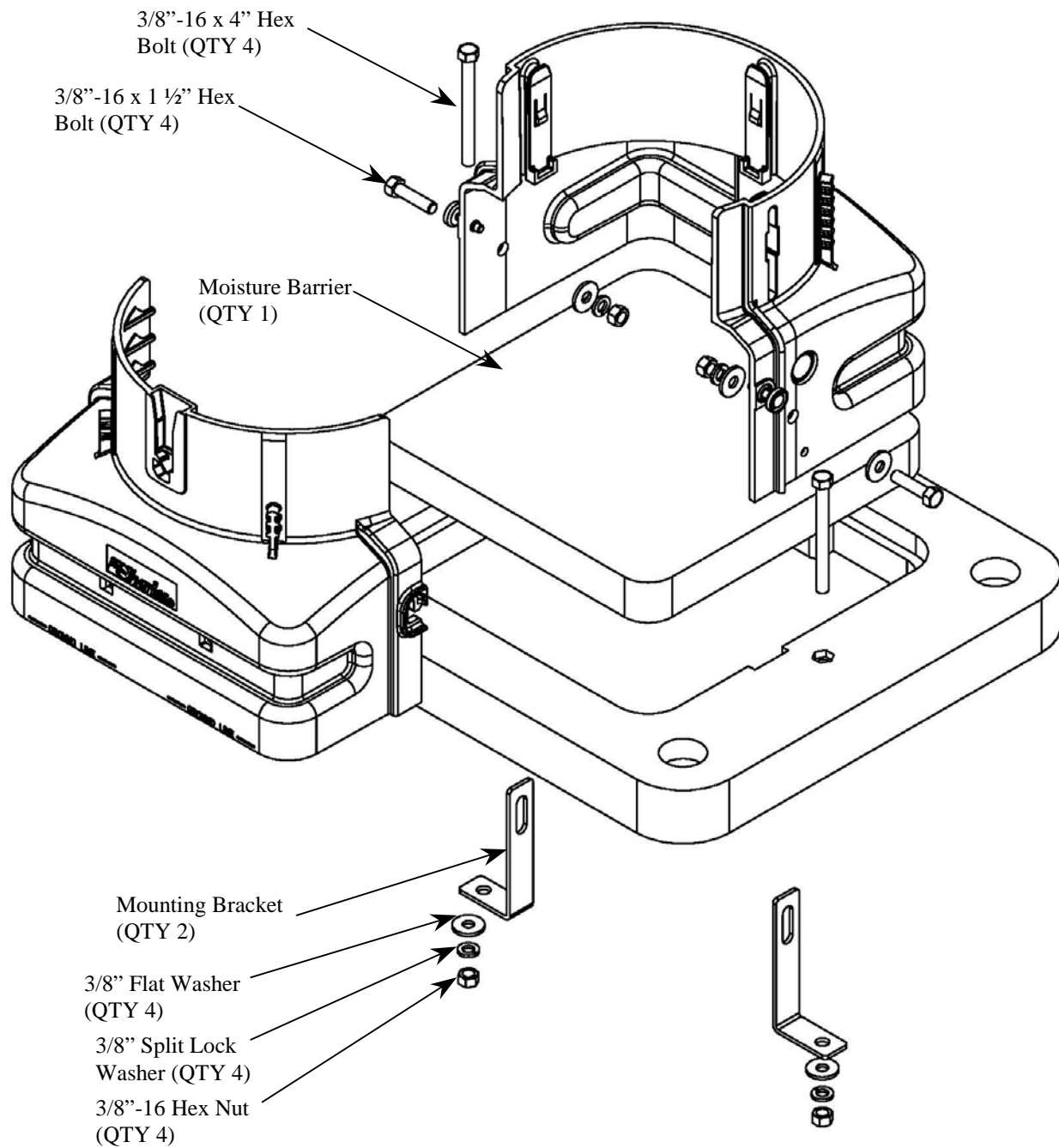


These instructions are intended for the installation of Charles Industries vault mounted square base. The following tools will be needed to complete the installation:

- 216 Tool
- 3/8" socket wrench with 3/8" socket or a 3/8" open end wrench

Note: Failure to follow this procedure could result in the kit not performing properly.

Step	Action
1.	Remove the kit items from the plastic bag and inventory its content. There should be two (2) mounting brackets (Charles Industries part number, 21-105848-0), two (2) 3/8"-32 x 4" hex bolts, four (4) 3/8"-32 hex nuts, four (4) 3/8" flat washers, four (4) 3/8" split lock washers, two (2) 3/8"-32 x 1.5" hex bolts and one (1) foam moisture barrier (Charles Industries part number, 39-300985-0). If parts are missing call Charles Industries Technical Support at 800-607-8500.
2.	Using the figure below, attach the base to the vault lid making sure to tighten the nuts securely.
3.	Install the foam moisture barrier.
4.	Install the dome onto the base, making sure the lock is engaged.



2008 Charles Industries Ltd.
 All rights reserved. Printed in the United States of America.
 Availability of features and technical specifications herein subject to change without notice.