

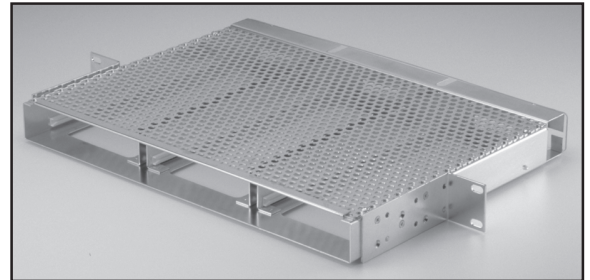
Charles Span Termination System (STS) Shelves

319-3H STS Shelf

The 319-3H STS Shelf is designed to mount in a 19" relay rack or cabinet and can mount three 3192 type (STS) Charles modules in a horizontal orientation.

Features

- Uses only one vertical mounting space
- Provides three 20-pin, wire-wrap connectors mounted on the rear of shelf
- Mounts in 23" relay racks or cabinets by using a Charles 8982-01 or equivalent
- Ventilation opening at shelf top and rear, entire bottom open
- Ears can alternately be mounted to provide flush mounting



Dimensions:

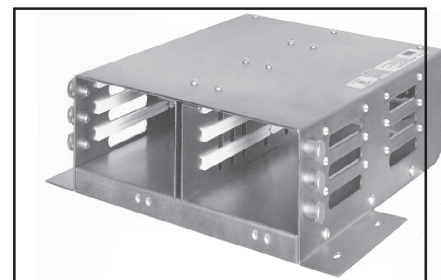
Depth	11.9" (30.2 cm)
Height	1.75" (4.45 cm)
Width	19" (48.3 cm)
Weight	5.7 lb (2.6 kg)

2819-01/02 Special STS Shelf

Charles 2819 Special STS Shelves are available in two shelf models that can accommodate up to six 3192 type (STS) Charles modules.

Features

- Mounting ears provide wall mounting on backboard
- Each module position is equipped with a convenient wire-wrap connector mounted on the rear of the shelf
- All inter-module connections are pre-wired at the factory



Dimensions:

Depth	12.25" (31.1 cm)
Height	13.33" (33.9 cm)
Width	3.18" (8.1 cm)
Weight	9.0 lb (4.1 kg)

Specifications

Wire Type	Solid, copper or tinned copper
Wire Size	22-24 gauge AWG

Part Numbers

92-281901-A	2819-01 mounts either four Charles 3192 type repeaters and a 3192-9F alarm unit or five Charles 3192 type repeaters
92-281902-A	2819-02 mounts six Charles 3192 type repeaters
92-03193H-A	319-3H mounts three Charles 3192 type modules

Copper Solutions. Golden Support™.

- Field-proven and unequalled technical support
- 24-hour Technical Support
- Training courses available



Charles Industries, Ltd.
Telecommunications Group
5600 Apollo Drive
Rolling Meadows, IL 60008

Telephone: (847) 806-6300
FAX: (847) 806-6231
E-Mail: mktserv@charlesindustries.com
Website: www.charlesindustries.com

 Charles is a trademark of Charles Industries, Ltd.

D-DSL004-B00